

MUNICIPAL SERVICE REVIEW UPDATE AND SPHERE OF INFLUENCE PLAN FOR PARADISE RECREATION AND PARK DISTRICT



ADOPTED BY RESOLUTION NO. 04 2009/10 ON JULY 2, 2009

PREPARED FOR:
BUTTE LOCAL AGENCY FORMATION COMMISSION



AUGUST 2009

PREPARED BY



**MUNICIPAL SERVICE REVIEW UPDATE
AND SPHERE OF INFLUENCE PLAN
FOR THE
PARADISE RECREATION AND PARK DISTRICT**

AUGUST 2009

PREPARED BY:

Kleinschmidt
Energy & Water Resource Consultants

**MUNICIPAL SERVICE REVIEW UPDATE
AND SPHERE OF INFLUENCE PLAN
FOR THE
PARADISE RECREATION AND PARK DISTRICT**

AUGUST 2009

TABLE OF CONTENTS

1.0	INTRODUCTION	1
1.1	LAFCO	1
1.2	BUTTE LAFCO POLICIES AND CRITERIA FOR SPHERE OF INFLUENCE PLANS	1
1.3	MUNICIPAL SERVICE REVIEWS	2
1.4	SPHERE OF INFLUENCE UPDATE PROCESS	3
1.5	CALIFORNIA ENVIRONMENTAL QUALITY ACT	4
2.0	DISTRICT PROFILE.....	5
2.1	DESCRIPTION AND EXISTING SETTING	5
2.2	SPHERE OF INFLUENCE.....	5
2.3	POPULATION	7
2.4	METHODOLOGY	7
2.5	GROWTH RATES AND PROJECTIONS	8
3.0	UPDATE TO THE 2005 MUNICIPAL SERVICE REVIEW OF RECREATION AND PARK SERVICE PROVIDERS.....	10
3.1	MUNICIPAL SERVICE REVIEW UPDATE: PARADISE RECREATION AND PARK DISTRICT	11
3.1.1	DISTRICT CHARACTERISTICS	11
3.1.2	REVIEW AND ANALYSIS OF SERVICE.....	13
3.1.3	SUMMARY OF DETERMINATIONS	33
4.0	SPHERE OF INFLUENCE ANALYSIS	35
4.1	PRESENT AND PLANNED LAND USE	35
4.2	PRESENT AND PROBABLE NEED FOR PUBLIC SERVICES AND FACILITIES.....	41
4.3	PRESENT CAPACITY OF FACILITIES	46
4.4	SOCIAL AND ECONOMIC COMMUNITIES OF INTEREST	48
4.5	SUMMARY OF DETERMINATIONS	51
5.0	FINAL SPHERE OF INFLUENCE ACTIONS	53
5.1	BUTTE LAFCO RESOLUTION OF ADOPTION	54
5.2	SUMMARY OF ADOPTED MSR DETERMINATIONS FOR THE PARADISE RECREATION AND PARK DISTRICT	59
5.3	SUMMARY OF ADOPTED SOI DETERMINATIONS FOR THE PARADISE RECREATION AND PARK DISTRICT	61
5.4	ADOPTED CEQA DOCUMENT	64
6.0	ACRONYMS AND DEFINITIONS.....	85
7.0	BIBLIOGRAPHY.....	87

**MUNICIPAL SERVICE REVIEW UPDATE
AND SPHERE OF INFLUENCE PLAN
FOR THE
PARADISE RECREATION AND PARK DISTRICT**

AUGUST 2009

LIST OF FIGURES

Figure 2-1: Current PRPD SOI and Jurisdictional Boundaries	6
Figure 4-1: Map of PRPD Zoning Designations	36
Figure 4-2: Map of PRPD Williamson Act Parcels	40
Figure 5-1: Map of Adopted SOI Boundary for PRPD	63

LIST OF TABLES

Table 2-1: BCAG Estimated Annual Growth Rates, 2006–2030.....	8
Table 2-2: Population Projections for the PRPD.....	9
Table 3-1: Paradise Recreation and Park Facilities	12
Table 3-2: Population Projections 2005–2030 for PRPD.....	14
Table 3-3: Distance to Facilities.....	15
Table 3-4: Program Participation Versus Population, 2000.....	16
Table 3-5: Future Recreational Facility Needs.....	17
Table 3-6: Recommended Facility Improvements, 2002–2016	18
Table 3-7: Summary of Revenues and Expenditures	21
Table 4-1: Butte County Land Use Designations and Zoning Within the PRPD	37
Table 4-2: Future Parkland Needs Based on Estimated Population Growth.....	42

1.0 INTRODUCTION

1.1 LAFCO

Established in 1963, Local Agency Formation Commissions (LAFCO) are responsible for administering California Government Code Sections 56000 et. Seq., which is known as the Cortese-Knox-Hertzberg Local Government Reorganization Act of 2000 (CKH). CKH charges LAFCOs with encouraging the orderly formation and development of all local governmental agencies in their respective counties in a manner that preserves agricultural and open-space lands, promotes the efficient extension of municipal services, and prevents urban sprawl. Principle duties include regulating boundary changes through annexations or detachments, approving or disapproving city incorporations; and forming, consolidating, or dissolving special districts. There is a LAFCO located in each of the 58 counties in California.

1.2 BUTTE LAFCO POLICIES AND CRITERIA FOR SPHERE OF INFLUENCE PLANS

Under the CKH Act, LAFCOs are required to “develop and determine the sphere of influence of each local governmental agency within the county and enact policies designed to promote logical and orderly development of areas within the sphere” (Section 56425, CKH). A sphere of influence (SOI) is generally considered a 20-year, long-range planning tool, and is defined by Government Code Section 56425 as “...a plan for the probable physical boundary and service area of a local agency or municipality...” According to the CHK Act, LAFCOs are required to review and update SOIs, as necessary, but no less than once every five years.

Pursuant to Butte LAFCO’s Operations Manual Policies and Procedures (Revised December 2, 2004), the Sphere of Influence Plans for all government agencies within LAFCO’s jurisdiction shall contain the following:

1. A map defining the probable 20-year boundary of its service area delineated by near-term (<10 years) and long-term (>10 years) increments and coordinated with the Municipal Service Review.
2. Maps and explanatory text delineating the present land uses in the area, including, without limitation, improved and unimproved parcels; actual commercial, industrial, and residential uses; agricultural and open space lands; and the proposed future land uses in the area.

3. The present and probable need for public facilities and services in the sphere area. The discussion should include consideration of the need for all types of major facilities, not just those provided by the agency.
4. The present capacity of public facilities and adequacy of public services which the agency provides or is authorized to provide.
5. Identification of any relevant social or economic communities of interest in the area.
6. Existing population and projected population at build-out of the near- and long-term spheres of the agency.
7. A Municipal Service Review.

1.3 MUNICIPAL SERVICE REVIEWS

The Cortese-Knox-Herzberg Act requires that a Municipal Service Review (MSR) be conducted prior to, or in conjunction with, the update of an SOI. An MSR is a comprehensive analysis of service provision by each of the special districts, cities, and the unincorporated county service areas within the legislative authority of the LAFCO. It essentially evaluates the capability of a jurisdiction to serve its existing residents and future development in its SOI. The legislative authority for conducting MSRs is provided in Section 56430 of the CKH Act, which states “. . . in order to prepare and to update Spheres of Influence in accordance with Section 56425, LAFCOs are required to conduct an MSR of the municipal services provided in the County or other appropriate designated area”

To assist in conducting an MSR, the State Office of Planning and Research developed guidelines that advise on information gathering, analysis, and organization of the study. In order to update an SOI, the associated MSR must have written determinations that address the following legislative factors:

1. Growth and population projections for the affected area.
2. Present and planned capacity of public facilities and adequacy of public services, including infrastructure needs or deficiencies.
3. Financial ability of agencies to provide services.
4. Status of, and opportunities for, shared facilities.
5. Accountability for community service needs, including governmental structure and operational efficiencies.
6. Any other matter related to effective or efficient service delivery, as required by commission policy.

These determinations, which range from infrastructure needs or deficiencies to government structure options, must be adopted by the Commission before, or concurrently with, the sphere review of the subject agency.

An MSR for the Butte County Recreation and Park Districts was initiated in 2004 and adopted by Butte LAFCO in 2005 (Resolution No. 13 2005/06). The MSR examines the public services provided by the District, and the information in the MSR provides baseline information for the SOI studies. However, because of the increasing population within the County and the changing status of impacted agencies, some of the information in the 2005 MSR is already dated. Thus, additional information from the recreation service providers has been collected and various other land planning documents have been reviewed, including Butte County and City General Plans, land-use zoning maps, and district master plans, in order to provide the most current and accurate information available. Interviews with District staff and municipalities were also performed to gain further insight into District issues. To provide for a cleaner process, the MSR has also been updated and included as Section 3.1 of this document, and will be re-adopted as a part of this SOI Plan process.

1.4 SPHERE OF INFLUENCE UPDATE PROCESS

Butte LAFCO is now in the process of updating the current SOIs for each of the seven recreation service providers in Butte County.¹ This document addresses the SOI update for the Paradise Recreation and Park District (PRPD or District). PRPD contains approximately 165 square miles and includes the incorporated Town of Paradise and unincorporated communities of Magalia/Paradise Pines and Concow/Yankee Hill. SOI updates for the remaining six recreation and park service providers have been developed under separate cover.

There are numerous factors to consider in reviewing an SOI, including current and anticipated land uses, facilities, and services, as well as any relevant communities of interest. Updates generally involve a comprehensive review of the entire SOI Plan, including boundary and SOI maps and the District's MSR. In reviewing an agency's sphere, the Commission is required to

¹ The seven park and recreation service providers within Butte County whose SOIs are being updated include the following special districts/county service areas: (1) Chico Area Recreation and Park District, (2) Durham Recreation and Park District, (3) Feather River Recreation and Park District, (4) Paradise Recreation and Park District, (5) Richvale Recreation and Park District, (6) County Service Area No. 31 – Schohr's Pool, and (7) County Service Area No. 34 – Gridley Swimming Pool.

consider and prepare written statements addressing four factors enumerated under California Government Code Section 56425(e). These factors are identified below.

- The present and planned land uses in the area, including agricultural and open-space lands.
- The present and probable need for public facilities and services in the area.
- The present capacity of public facilities and adequacy of public services that the agency provides or is authorized to provide.
- The existence of any social or economic communities of interest in the area if the commission determines that they are relevant to the agency.

In addition, when reviewing a sphere for an existing special district, the Commission must also do the following:

- Require the existing district to file a written statement with the Commission specifying the functions or classes of services it provides.
- Establish the nature, location, and extent of any functions or classes of services provided by the existing district.

1.5 CALIFORNIA ENVIRONMENTAL QUALITY ACT

Sphere of Influence Studies are subject to Environmental Review under the California Environmental Quality Act (CEQA) and a Negative Declaration has been prepared for the PRPD's SOI and included in Section 5.4. As indicated earlier, an SOI is a long-range planning tool that analyzes the physical boundary of a local agency or jurisdiction, and the present and probable need for services within that area. As such, it does not give property inside the sphere boundary any more development rights than already exist. Ultimately, an SOI plan assists LAFCO in making decisions about a jurisdiction's future boundary. The sphere indicates the logical area in which the District anticipates services will be utilized.

2.0 DISTRICT PROFILE

2.1 DESCRIPTION AND EXISTING SETTING

The Paradise Recreation and Park District (PRPD or District) is located in north-central Butte County, with all but small portions of it lying between the parallel stretches of State Highway 32 and State Highway 70 (Figure 2-1). The District's western boundary is contiguous with parts of the City of Chico's eastern boundary. The District consists of approximately 106,096 acres (165 square miles) and serves a population of approximately 41,200.² It encompasses the Town of Paradise, the Butte Creek Canyon area, and the unincorporated communities of Magalia/Paradise Pines and Concow/Yankee Hill. It also includes portions of four school districts: Chico Unified School District, Paradise Unified School District, Golden Feather Union Elementary School District, and Oroville Union High School District.

2.2 SPHERE OF INFLUENCE

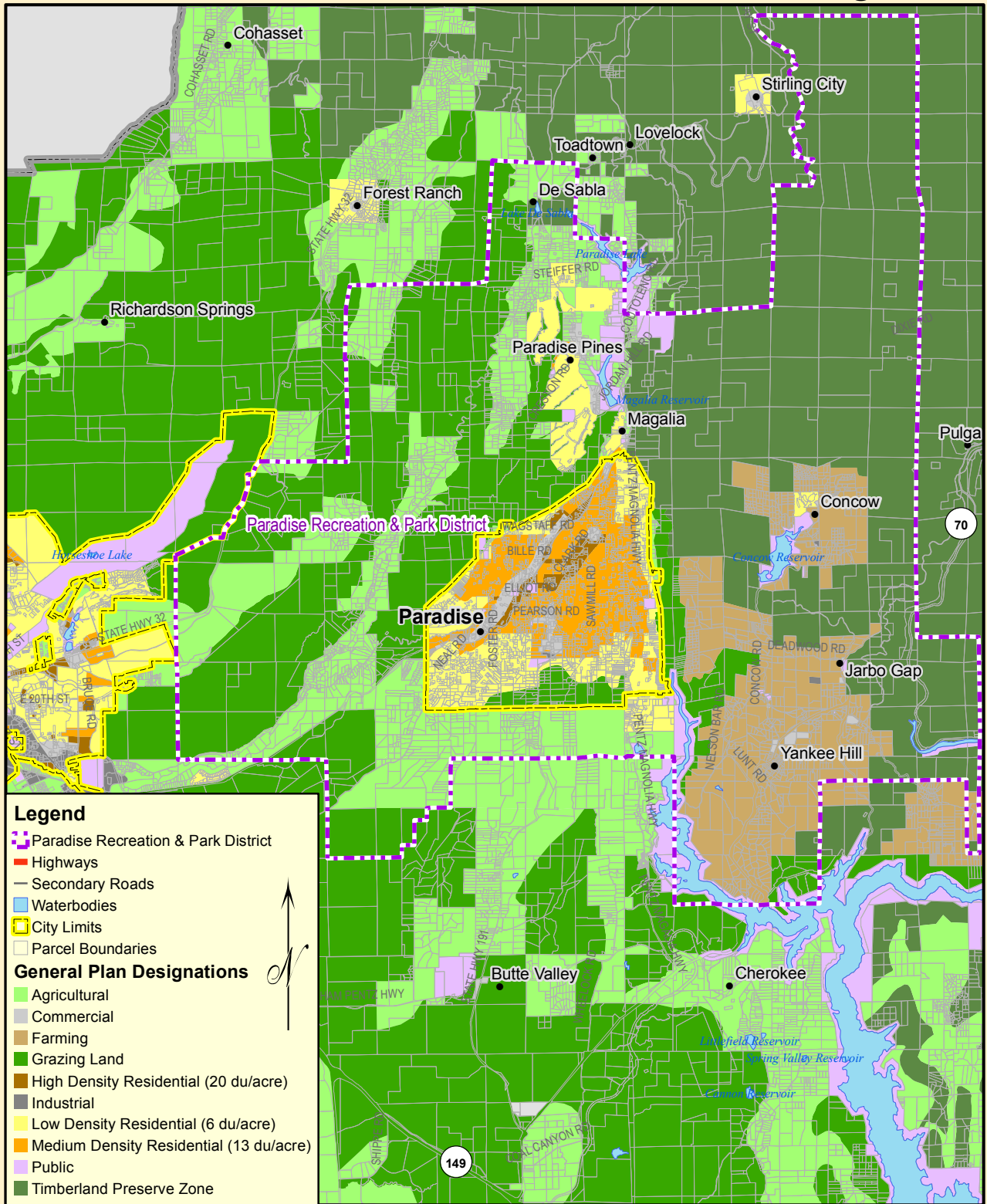
The PRPD was established as an independent special district in 1948 to provide recreational facilities and programs to residents of the Paradise Ridge Community and surrounding area (the Town of Paradise itself was incorporated in 1979). The District's current SOI is coterminous with its boundaries; and there has been only one amendment to District boundaries since the 1985 Paradise Area Sphere of Influence Study.³ In 1996, three parcels, consisting of approximately 845 acres located between Big Chico Creek and State Highway 32, were detached from the PRPD and annexed to the Chico Area Recreation and Park District. LAFCO Resolution No. 97-02, approving the reorganization, was passed and adopted on September 5, 1996.

To the west, east, and south, the District's SOI is contiguous with that of three other recreation and park districts: Feather River Recreation and Park District (FRRPD) to the east and southeast, Durham Recreation and Park District to the south, and Chico Area Recreation and Park District to the southwest. The unincorporated area to the north of the District's SOI, including the community of Stirling City, is not included in any recreation and park district at this time.

² Butte County 2030 General Plan, Setting & Trends Report Public.

³ Paradise Area Sphere of Influence Study – Butte Local Agency Commission. April 1985.

Figure 2-1



Paradise Recreation and Park District 2009 SOI and Jurisdictional Boundaries

BUTTE LOCAL AGENCY FORMATION COMMISSION

Service area boundaries and sphere of influence boundaries are based on best available data, are provided for general representational purpose only, and should not be considered final LAFCO approved boundaries

Kleinschmidt
Energy & Water Resource Consultants

251 South Auburn St., Suite C
Grass Valley, CA 95945
Telephone: (530) 852-4837
Fax: (530) 852-4837
www.KleinschmidtUSA.com

2.3 POPULATION

Typically, population projections from MSRs are used to develop SOI updates. Since the preparation of the 2005 MSR, California's growth continued to increase dramatically for a time. However, in recent years a nationwide economic downturn has resulted in a slowing of development and growth in California. Butte County has experienced the effects of the slowing economy and, as a result, the Butte County Association of Governments (BCAG) has since revised the population growth rate estimates used in the MSR in order to better reflect the current growth rate in Butte County. For this reason, population projections were re-estimated for this SOI Plan, using the BCAG's revised growth rates for the years 2006–2030. These rates have also been amended in the updated MSR included in this document as Section 3.1.

2.4 METHODOLOGY

The population estimates for PRPD provided in the 2005 MSR included three methodologies for projecting future population between 2000 and 2025. One scenario used the annual growth rate of Butte County (without the Chico Area) between 1990 and 2000, applied to the 2000 U.S. Census population figures for the District. A second scenario used a static share of the estimated Butte County population growth rate applied to 2000 U.S. Census data for the District. The third method used the estimated growth rate for Butte County (excluding the Chico Area), developed by BCAG in 2004, and applied to the 2000 U.S. Census data for the District. According to the MSR, the method that best estimated the projected populations of PRPD was the third scenario, which based the calculations on a share of both the County's and the Town's growth rates, as projected by the BCAG in 2004. The MSR population estimates and projections using these methodologies are shown in Table 3-2 of the updated MSR Chapter (Section 3.1).

The method determined most appropriate for projecting future population growth for this SOI Plan is based on BCAG's estimated annual growth rates developed for the County's unincorporated areas for 2006 to 2030. However, under the existing General Plan, there is very little growth potential within the unincorporated areas around the Town of Paradise. The SOI Plan uses 2007 estimated population counts from the U.S. Census, which have been provided to the block level and linked with geographic information for Butte County, including City limits and special district service areas. District boundaries were matched (as closely as possible) with the 2007 Census blocks to provide a weighted estimate of the 2007 population within the

District’s service boundaries. This approach is consistent with methodologies utilized in the 2005 MSR, as well as other planning documents within the County that guide future growth and development.

This SOI Plan utilizes BCAG projections because they are required to be updated every three years and are used consistently throughout Butte County for planning documents, including County and City General Plans. Moreover, the most recent BCAG estimates, *Butte Regional Growth Projections 2006–2030*, were developed in collaboration with the Planning Directors Working Group, which is comprised of planning directors and staff from the County, Town of Paradise, and each of the Cities. The current growth projections for the incorporated and unincorporated areas of Butte County, shown below in Table 2-1, take into account both the wide variance in recent growth rates and Department of Finance 2006 population estimates.

TABLE 2-1: BCAG ESTIMATED ANNUAL GROWTH RATES, 2006–2030

BUTTE COUNTY JURISDICTION	AVERAGE ANNUAL GROWTH RATE
Paradise	1.1%
Unincorporated	1.1%

Source: Butte Regional Growth Projections 2006–2030

2.5 GROWTH RATES AND PROJECTIONS

Completed in 2001, the District’s *Master Plan 2002–2016* utilized the BCAG population projections available at that time. The Plan had estimated an annual growth rate of 1.3 percent for the Town of Paradise and 1.6 percent for the surrounding unincorporated areas, which would have put the District’s population in 2015 at nearly 54,000. The 2005 MSR used BCAG’s estimates of future population growth within cities, weighted to reflect the portion of the District population within the Town of Paradise and the portion outside the Town limits. The MSR’s population estimates were 7,000 residents fewer than the District’s Master Plan by the year 2015, the extent of the Plan’s projections. As discussed in the Methodology section above, revised population projections were prepared for this SOI Plan, based on the U.S. Census estimated 2007 population and BCAG’s revised growth rates for the years 2006–2030.

PRPD includes one incorporated city, the Town of Paradise, and the remainder of its lands fall within the unincorporated areas of Butte County. Paradise has one of the slowest growth rates of

the cities in Butte County, determined by BCAG to equal that of the unincorporated areas (at 1.1 percent). This rate was based on past housing growth rates with the assumption that similar growth would continue into the future. To develop future population projections for PRPD, the growth rate for both the Town of Paradise and the unincorporated areas (1.1 percent) was applied to 2007 estimated population for the District, which was calculated to be 39,325 residents. Future population estimates have been projected in 5-year increments for the period from 2010 to 2030 (Table 2-2).

TABLE 2-2: POPULATION PROJECTIONS FOR THE PRPD

POPULATION GROWTH ESTIMATE	2000 (CENSUS)	2005	2010	2015	2020	2025	2030
<i>PRPD Master Plan</i>	43,670	46,854	50,274	53,948	–	–	–
Updated Projections ⁴	37,715	N/A	40,673	42,922	45,335	47,884	50,576
2005 MSR Projection ⁵	–	42,068	44,350	46,758	49,299	51,981	–
Difference (Updated Projections 2005 – MSR Projections)	–	–	–3,677	–3,836	–3,964	–4,097	–

The difference in projections between this SOI Plan and the 2005 MSR exceeds –4,000 residents by the year 2025. The difference is even greater between the population projections estimated in the District’s Master Plan, with a difference of –11,026 residents by the year 2015.

The draft Southeast Paradise Area Specific Plan, which has not been approved by the Town of Paradise, proposes to add approximately 1,829 additional residential units to the southeast Paradise area. This housing would allow an addition of approximately 3,152 people within the Plan area, which amounts to a 12 percent increase in population and a 13 percent increase in housing from the 2006 levels. The largest number of homes would be part of an “active senior village,” which is generally referred to as “independent living” for senior citizens.⁶ Because the Southeast Paradise Area Specific Plan is tentative at this time, the potential population increase created by this specific plan has not been included in the population estimates for PRPD.

⁴ Estimate based on growth rates from BCAG’s Butte Regional Population Growth Projections 2006–2030; and U.S. Census population estimate for 2007. GIS calculated an estimated 2007 population for PRPD of 39,325.

⁵ Data is from the 2005 MSR, Table 3-2: “Population Projections, 2005–2025, Paradise Recreation and Park District – Share of County Growth + Share of City Growth.”

⁶ *Southeast Paradise Area Specific Plan*

3.0 UPDATE TO THE 2005 MUNICIPAL SERVICE REVIEW OF RECREATION AND PARK SERVICE PROVIDERS

The Municipal Service Review prepared by Cotton/Bridges Associates and adopted by Butte LAFCO in 2005 provides the background and general analysis upon which this SOI Plan is based. Because a number of years have passed since the MSR was prepared, some of the information has become outdated. As part of the SOI study process, the MSR chapter for Paradise Recreation and Park District has been updated as follows in Section 3.1 to ensure that the Commission has the most current information for considerations regarding the appropriate SOI for the District.

3.1 MUNICIPAL SERVICE REVIEW UPDATE: PARADISE RECREATION AND PARK DISTRICT

3.1.1 DISTRICT CHARACTERISTICS

Encompassing 165 square miles, the Paradise Recreation and Park District (PRPD or District) is bordered by the City of Chico on the west, Highway 70 on the east, Lime Saddle Recreation Area on the south, and Stirling City on the north (Figure 2-1). The District includes the Town of Paradise, and surrounding unincorporated areas of Magalia/Paradise Pines, Butte Creek Canyon, and Concow/Yankee Hill.

The District was formed in 1948 to provide leisure activities to its residents with the purpose statement establishing some early goals: “. . . to improve present facilities in the area, such as the Paradise Swimming Pool, build new facilities, including a softball diamond, and utilize natural resources for recreation.” The District, which originally served 7,500 to 10,000 residents of Paradise and surrounding communities, had boundaries coterminous with the school districts of Centerville, Canyon View, Concow, De Sabla, and Paradise.

DISTRICT SIZE:	106,096 acres (165 square miles)
LOCATION:	Northeastern portion of Butte County, surrounding the Town of Paradise and unincorporated areas of Magalia/Paradise Pines, Butte Creek Canyon, and Concow/Yankee Hill.
OFFICE LOCATION:	6626 Skyway, Paradise, CA 95969
EMPLOYEES:	14 full-time and 8 full-time equivalent
SERVICES:	District maintains 77.5 acres of developed parkland and 353.5 acres of undeveloped open space. The District provides supervised recreational programs, individually, and cooperates with other local organizations to provide park and recreational services.
POPULATION SERVED:	39,325 residents in 2007
DATE OF FORMATION:	1948
ENABLING LEGISLATION:	Public Resources Code Section 5780 et seq.

Table 3-1 summarizes the District’s park and recreational facilities. Almost all District parks have a playground area, and overall a large variety of facilities are available. Many of the parks have undeveloped areas that could be used for expansion in the future. The District does not classify parks with typology such as neighborhood park, mini-park, or community park. Taken together, the District has approximately 431 acres of parkland, of which 77.5 acres are developed.

TABLE 3-1: PARADISE RECREATION AND PARK DISTRICT FACILITIES

PARK NAME	ACRES	IMPROVED ACRES	DATE ACQUIRED	FEATURES
Terry Ashe Recreational Center	3.5	3.5	Leased	Recreation Center, Main Office, Playground, Activity Rooms, Basketball
Paul Byrne Aquatic Park	6.0	6.0	1958	Picnic Areas, Playground, Fishing, Swimming, Activity Room, Barbeque, Volleyball, Horseshoe
Moore Road Park	19.0	19.0	1966	Equestrian, Baseball/ Softball, Ropes Course
Bille Park	55.0	19.0	1961	Picnic Areas, Playgrounds, Hiking, Horseshoes
Coutolenc Park	320.0	20.0	1965	Primarily unimproved park with Hiking, Archery
Paradise Memorial Park	2.0	2.0	1949	Museum
Crain Memorial Park	8.0	8.0	1956	Picnic Area
Oak Creek Natural Area	17.0	0.0	1974	Natural area
Drendle Circle	0.5	0.0	1980	Small undeveloped land
Paradise High School and Mountain Ridge Middle School			Joint Use	Baseball/Softball, Basketball, Volleyball
Total	431.0	77.5		

Sources: *Paradise Recreation and Park District, 2009.*

Although not owned or managed by the Paradise Recreation and Park District, Paradise Lake offers numerous recreational opportunities to area residents. Paradise Lake, which is located in the Coutolenc area north of the Town of Paradise, is owned and managed by the Paradise Irrigation District and is utilized to provide domestic water for the residents of the Town of Paradise. Recreational opportunities at Paradise Lake include:

- Playground
- Horseshoes
- Walking/Biking/Hiking
- Fishing
- Bird Watching
- Running/Walking
- Fishing Derbies
- Kid’s Fishing Day
- Group Picnics
- Boating

Paradise Lake is open for use to the public from 5 a.m. to 9 p.m. daily, except on Wednesdays, when it is closed. Boating season runs from the last Saturday in April to November 15. Fishing is permitted year round from the shore in Winter Designation Areas. Camping, swimming, and wading are not allowed.

Like Paradise Lake, the 20-acre privately-owned Merlo Park, which is located on the southeast side of Stirling City, is available for use by area residents. The park contains a wide variety of trees, three large ponds, individual and group picnic areas, nature trails, meadows, horseshoe pits, a bocce court, restrooms, and an outdoor wedding chapel. Merlo Park is typically open May through September.

3.1.2 REVIEW AND ANALYSIS OF SERVICE

A. INFRASTRUCTURE NEEDS AND DEFICIENCIES

This section analyzes the infrastructure needs and deficiencies of the Paradise Recreation and Park District. Information is derived from the 2001 Paradise Recreation and Park District’s Master Plan (2002–2016), 2005 Municipal Service Review, and interviews with key District personnel. The section details infrastructure needs and deficiencies with respect to park acreage, facilities, programs, and operational capacity.

ISSUE #1: POPULATION GROWTH

The Paradise Recreation and Park District served an estimated 39,325 residents in 2007.⁷ According to the District Master Plan (2001), the District’s population will increase to 53,948 by 2015. However, recent growth rates for both the Town of Paradise and the unincorporated areas of Butte County were re-calculated by the Butte County Association of Governments (BCAG) to be 1.1 percent annually for 2006–2030. Consequently, growth projections have been updated to reflect these more recent estimates.

To arrive at population growth projections for 2025, this MSR has developed projections for each jurisdiction in Butte County. The District’s population is estimated to increase from 39,325 in 2007 to 50,576 by 2030 (Table 3-2). This future population estimate takes into account the most recent Butte County Association of Governments’ population estimates for both Paradise and unincorporated areas of the County.

TABLE 3-2: PRPD POPULATION PROJECTIONS 2005-2030 FOR PRPD

FUTURE POPULATION SCENARIO	2005	2010	2015	2020	2025	2030
Share of County Growth + Share of City Growth	–	40,673	42,922	45,335	47,884	50,576

Source: Butte County Association of Governments, 2006–2030; 2007 Estimated Census. Analysis by Kleinschmidt Associates, 2008.

DETERMINATION 3-1: GROWTH AND POPULATION FOR THE AFFECTED AREA	
	<i>The population in the District is expected to grow at a rate of 1.1 percent.</i>

ISSUE #2: PARKLAND NEEDS

Park Needs

Recreation service providers often use estimates of future population growth to determine the needs for parkland and recreation facilities and services. Historically, the National Park and Recreation Association suggested that communities have 6 to 10 acres of developed parkland per 1,000 people to meet the needs for active recreation. This standard could be met by the local

⁷ Population estimates are based on the 2007 estimated U.S. Census and Butte County Association of Governments 2006–2030 growth rates to develop projections with a consistent methodology that is applicable for all Districts.

recreational service provider, national and state park areas, and various local organizations such as schools, churches, and nonprofit organizations. In recent years, NPRA has advocated a community-based approach to defining park and recreation needs.

The Paradise Recreation and Park District has adopted a goal of five acres of accessible and developed parkland for every 1,000 residents. Developed parkland can include both active and passive use areas. The District currently has 77.5 acres of developed parkland, translating into nearly 2 developed acres for every 1,000 people. To achieve the District’s parkland standard, an additional 119 acres of developed parkland are needed to address the District’s 2007 shortfall, and an additional 162 acres are needed by 2025 to accommodate an expected population of nearly 48,000. The District currently owns 353.5 acres of undeveloped parkland, which is sufficient to meet future needs.

**TABLE 3-3
DISTANCE TO FACILITIES**

DISTANCE	PERCENTAGE OF RESIDENTIAL PROPERTIES
½ Mile	30
1 Mile	72
2 Miles	93
5 Miles	100

Source: MSR, Cotton/Bridges/Associates, 2005.

Park Accessibility

According to the District Master Plan, “parks need to be properly distributed throughout the District so that barriers such as major highways, canyons, and rivers do not prevent residents from getting to the facilities they want to use.”⁸ Approximately 30 percent of the District’s residential properties are located within ½ mile of a

District facility and 72 percent of residential properties are within one mile. However, topographic and other travel barriers require some users to drive up to 20 miles to reach certain types of park facilities. Table 3-3 displays the service radius of parks.

To accommodate expected demand for parkland and to assess and improve the ability of residents to access new facilities, the District divides its service area into six planning areas. These areas are Magalia/Paradise Pines, Town of Paradise, Butte Creek Canyon, Concow/Yankee Hill, Forest Ranch, and Feather River Canyon. The District Master Plan recommends locating new parkland in the following areas: Magalia (13 to 18 acres), Paradise (five acres), Butte Creek Canyon (two to five acres), and Crain Memorial Park (three acres) in

⁸ Paradise Recreation & Park District. *Master Plan 2002–2016*, 2001.

the Concow area. Yankee Hill and Forest Ranch are recommended locations for parks if population growth occurs in those areas.

ISSUE #3: RECREATION FACILITY NEEDS

The District utilizes three primary factors in planning for existing and future facility needs. Historically, the National Park and Recreation Association (NPRA) provided guidelines for the number and type of facilities needed by a community on a per-capita basis. The District considers the NPRA standard as well as the availability of recreational facilities provided by churches, community groups, schools, and other groups in the community. In addition, the District considers the current utilization rate by the community. Table 3-4 displays the District’s population age and program participation for the year 2000. The high proportion of seniors in the District has implications for planning recreational facilities and services.

TABLE 3-4: PROGRAM PARTICIPATION VERSUS POPULATION, 2000

NUMBER OF PERSONS	POPULATION IN DISTRICT	PERCENTAGE OF RESIDENTS	PROGRAM PARTICIPANTS	PERCENTAGE OF PARTICIPANTS
Preschool (Under 5)	1,940	4%	404	8%
Youth and Teen (Age 5–17)	7,416	17%	1,552	30%
Adult	23,840	54%	2,824	54%
<i>Age 18–29</i>	4,623	10%	n/a	n/a
<i>Age 30–49</i>	11,186	25%	n/a	n/a
<i>Age 50–64</i>	8,031	18%	n/a	n/a
Age 65 and up	11,165	25%	455	9%
Total	44,361			

Source: Paradise Recreation and Park District, 2001.

Notes: Special events were attended by 7,400 visitors and aquatics were attended by 42,449 visitors. The age groups using these services were not tabulated.

Table 3-5 illustrates District planning for future recreational facilities needs by 2015, using national standards, and provision of recreational facilities by other organizations. This analysis guides the District in the master planning process.

TABLE 3-5: FUTURE RECREATIONAL FACILITY NEEDS

FACILITY	GUIDELINE FACILITIES/ RESIDENTS	TARGET 2015	CURRENTLY PROVIDED			ADD'L NEED BY 2015 ²
			PRPD FACILITIES	SCHOOL FACILITIES ¹	OTHER AGENCIES	
Basketball Court – indoor	1/10,000	5	1 outdoor	20 outdoor, 4 indoor	3 outdoor; 3 indoor – Churches	3 indoor
Ball Wall/Hand Ball	1/15,000	4		2	4 (Private Club)	2
Tennis Court	1/2,000	3	4 lighted	4 unlighted		0
Volleyball Court	1/10,000	5	1 outdoor	5 indoor	35 outdoor	3
Baseball Fields (total)	1/10,000	5	1 baseball 1 softball	3	2 (Little League)	3
Baseball Fields (lighted)	1/20,000	3	1 baseball 2 softball			1
Multi-use Field	1/10,000	5		11		5
Soccer Field	1/10,000	5				5
¼-Mile Running Track	1/30,000	2		1		1
Community Center	1/15,000	4	1		Senior Center, service clubs	2
Dog Park	1/60,000	1				1
Skateboard Park	1/70,000	1				1
Trail System	1 system				County Trail System	
Playgrounds	1/3,000	18	5	6	8 (Private School/Church)	5
Golf Course (9)	1/25,000	2			Tall Pines Course	1
Golf Course (18)	1/50,000	1			Skyway Course	
Golf Driving Range	1/50,000	1			Tall Pines, Skyway	
Swimming Pools	1/20,000	3	1	1	1 (Private Club)	1
Group Picnic Area	1/10,000	5	3			2
Gymnasium	1/20,000	3	1 ³	3	3 (Churches)	3

Source: Paradise Recreation and Park District, 2009.

¹ Use of these facilities is limited by scheduling and access.

² Limited Use of non-PRPD facilities partially contributes toward meeting projected need.

³ Joint-use with Paradise Unified School District.

ISSUE #4: OPERATIONAL NEEDS

The District uses 6,000 square feet of space in the Terry Ashe Recreation Center. However, additional facility space is needed to support existing and future administrative staff, as well as recreational programming needs. The current facility is also constrained for expansion and needs substantial renovation. The District originally planned to demolish the Center and build a larger structure in its place. However, faced with a \$1 million shortfall in necessary funding, PRPD has abandoned plans for demolition and is now planning a full renovation of the existing building, which will leave the District with extra funding to pursue other projects that have been on hold.

The District has also identified vehicle and equipment replacement needs, approximately one-third of the estimated cost of which is short-term, and approximately two thirds of which is identified as a longer-term need.

TABLE 3-6: RECOMMENDED FACILITY IMPROVEMENTS, 2002–2016

Project Priority Level/Type	Short-Term (5 yrs)		Long-Term (6 – 15 yrs)		Total
	Qty	Est. Cost	Qty	Est. Cost	Est. Cost
Priority 1 Projects					
Terry Ashe Recreation Center	n/a	\$2,600,000	n/a	-0-	\$2,600,000
Moore Road Dog Park	n/a	\$5,000	n/a	-0-	\$5,000
Coutolenc Park	n/a	\$126,500	n/a	-0-	\$126,500
Crain Memorial Park	n/a	\$320,000	n/a	-0-	\$320,000
Bille Park	n/a	\$50,000	n/a	-0-	\$50,000
Park Land Acquisition (Magalia)	n/a	\$300,000	n/a	-0-	\$300,000
Magalia Park Development	n/a	\$250,000	n/a	-0-	\$250,000
Repairs & Renovations	n/a	\$159,500	n/a	-0-	\$159,500
Vehicles / Equipment	n/a	\$105,000	n/a	-0-	\$105,000
Subtotal	n/a	\$3,916,000	n/a	-0-	\$3,916,000
Priority 2 Projects					
Aquatic Park	n/a	-0-	n/a	\$3,550,000	\$3,550,000
Terry Ashe Recreation Center	n/a	-0-	n/a	\$100,000	\$100,000
Moore Road	n/a	-0-	n/a	\$555,000	\$555,000
Coutolenc Park	n/a	-0-	n/a	\$250,000	\$250,000
Crain Memorial Park	n/a	-0-	n/a	\$8,000	\$8,000
Maintenance Shop	n/a	-0-	n/a	\$527,500	\$527,500
Bille Park	n/a	-0-	n/a	\$10,000	\$10,000
Magalia Park (High School)	n/a	-0-	n/a	\$1,500,000	\$1,500,000
Athletic Fields	n/a	-0-	n/a	\$585,000	\$585,000
Land Acquisition (Butte Creek Cyn)	n/a	-0-	n/a	\$250,000	\$250,000
Trail Development	n/a	-0-	n/a	\$30,000	\$30,000
Repairs & Renovations	n/a	-0-	n/a	\$153,500	\$153,500
Vehicles / Equipment	n/a	-0-	n/a	\$115,000	\$115,000
Subtotal	n/a		n/a		
Total	n/a	\$3,916,000	n/a	\$7,634,000	\$11,550,000

Source: Paradise Recreation and Park District, January 20, 2009.

DETERMINATION 3-2: PRESENT AND PLANNED CAPACITY OF PUBLIC FACILITIES AND ADEQUACY OF PUBLIC SERVICES, INCLUDING INFRASTRUCTURE NEEDS AND DEFICIENCIES

3-2.1: The District uses appropriate methods to gauge the need for, fund, and provide parkland, recreational facilities, and recreational programming to meet the needs of the community and has sufficient land holdings to accommodate future needs, though these land holdings are not necessarily in locations that are suitable with respect to accessibility and existing and future populations. The District provides adequate levels of service for parks and recreational facilities except in outlying areas such as Butte Creek Canyon and the eastern communities of Concow and Yankee Hill. The District has prioritized parkland development in Magalia/Paradise Pines, Butte Creek Canyon, and the Concow area, and the District should also acquire and develop parkland in the Yankee Hill area if population growth occurs.

3-2.2: In order to more effectively define service areas, the SOI boundary between the PRPD and FRRPD is to be redrawn to place all lands north and east of the North Fork Feather River and the territory north of Durham-Pentz Road (including Spring Valley School) into the PRPD service area.

3-2.3: Crain Park does not currently provide a reasonably maintained or equipped facility to the community and will require significant investment to function as a full-service community park site. Short of a full improvement plan, PRPD could provide a program at Crain Park similar to PRPD's "Camp Coutolenc," located at Coutolenc Park in Magalia, which offers a variety of outdoor activities including archery, crafts, camp cooking, sports and games, hiking, camp safety, and environmental awareness.

3-2.4: The PRPD should immediately pursue a committed partnership with the GFUESD through the development of a comprehensive joint use agreement that would allow for the use of school district facilities that have the potential to enhance recreational programs and services in the PRPD's eastern communities' service area.

B. FINANCING, RATE RESTRUCTURING, CONSTRAINTS AND OPPORTUNITIES

District finances and financial practices were reviewed as part of this service review. Sources of information include the District's annual budget, financial statements and auditor's report, capital improvement plans, and discussions with District staff.

ISSUE #1: DISTRICT FINANCING

The District operates on a 12-month fiscal year that begins July 1 and ends June 30. The District submits to the County Auditor a budget of estimated revenues and expenses approved by the Board of Directors each year prior to June 30 that address the forthcoming fiscal year. The final

budget is legally enacted by the Board of Directors prior to August 10 after any changes, if necessary, are made.

Revenues and Expenses

For the past three years, the District revenues have totaled approximately \$1.8 million annually. Shown in Table 3-7, discounting one-time cash inflows, District revenues are largely comprised of property taxes (70 percent), fees and charges for services (17 percent), and interest from District reserves (five percent). The District typically has expenditures of \$1.4 million annually, after discounting one-time, fixed-asset purchases. Discounting fixed assets expenditures, District expenditures are comprised of salaries/benefits (67 percent) and services/supplies (24 percent).

District Assets, Liabilities and Reserves

The District had \$2,639,744 in cash and cash equivalents deposited in the County Treasury as of the end of 2008. Total funding for Fiscal Year 2007–2008 was \$2,526,000, of which \$1,299,426 was designated for particular uses. The unreserved undesignated fund equity totaled \$1,167,243 at the end of 2008.⁹ The District does not have any long-term debt. The District does not have an adopted policy regarding reserves, but staff has a goal of keeping at least 50 percent of one year of tax revenue in reserve (\$672,250). Capital improvements are made using reserve funding as it becomes available. Current unreserved undesignated reserves as of June 30, 2008, total \$1,167,243. Overall, the District has been able to meet its ongoing operating expenses, but is using interest earned from its reserves to address ongoing expenses. Beginning in Fiscal Year 2004–2005, the District projected an annual deficit averaging \$60,000 for the forthcoming 10 years as a part of its Master Plan. However, property tax revenues since the Master Plan update have been higher than anticipated, and District staff now believes that the previously projected annual deficit has been eliminated.

⁹ Unreserved, undesignated funds are those available to meet normal operating expenditures and are not restricted for any particular use.

TABLE 3-7: SUMMARY OF REVENUES AND EXPENDITURES

REVENUES	ACTUAL 2007–2008	ACTUAL 2006–2007	ACTUAL 2005–2006
Property and Misc Taxes	1,331,917	1,253,566	1,045,253
Interest Income	94,844	64,938	55,304
Impact & Development Fees	95,584	136,472	141,367
Homeowners' Property Tax Relief	22,156	22,788	23,016
Charges from Current Services	325,693	355,714	376,493
Other Revenue & Grants	41,552	28,111	103,277
Total Revenue	1,911,746	1,861,589	1,744,710
Expenditures			
Salaries and Benefits	970,714	960,913	935,138
Services and Supplies	341,887	505,025	318,801
Contributions to Other Agencies	18,310	16,855	107,414
Fixed Assets	119,232	119,418	75,199
Total Expense	1,450,143	1,602,211	1,436,552
Excess (deficiency) of Revenues over expenditures	461,603	259,378	308,158
Fund Balances at Beginning of Year	2,064,401	1,805,023	1,496,865
Fund Balance at End of Year	2,526,004	2,064,401	1,805,023

Source: Paradise Recreation and Park District, 2009.

Capital Improvements

The District funds capital improvement projects through various mechanisms, depending on the type, location, and timing of the project relative to funding cycles. Capital improvements costing less than \$50,000 are normally financed through the annual budget. However, larger upgrades are financed using State grants, District reserves, and donations. During fiscal years 2009–2010, the District anticipates receiving \$576,000 from the Per Capita grant authorized by the 2002 Resources Bond and \$500,000 from Roberti-Z' Berg-Harris. The District has \$1,767,243 in its General Fund balance that may be combined with Proposition 40 funds to implement major capital projects in fiscal year 2009–2010. The District will also apply for funding under Proposition 84.

ISSUE #2: RATE RESTRUCTURING

Since the passage of Proposition 13 in 1978, California jurisdictions have increasingly relied on alternative revenue sources (such as user fees and developer impact fees) to finance existing services as well as construct new facilities. Given the District's heavy reliance on property taxes and the inflexibility of this revenue source, opportunities for rate restructuring are worth exploring.

Development Impact Fees and Sub-Division Fees

To help fund increases in parkland and recreation facilities needed to keep pace with population growth, the District receives Development Impact Fees. These fees, implemented on January 1, 2005, and revised in January 2007, are based on the square footage of new development within the District. The Town of Paradise collects the Development Impact Fees through building permits issued for construction within the Town limits, and Butte County does the same for the unincorporated areas within the District. Increases to these fees are recommended every two to three years, in consideration of increases in the construction cost index. The current fees are:

\$.50 per square foot	Single Family Dwelling
\$.86 per square foot	Multi-family Dwelling
\$.50 per square foot	Residential Additions

The Paradise Recreation and Park District established Sub-Division fees within the Town of Paradise limits on November 20, 1990. The Town controls the implementation of these fees on approved development projects. The fee is established by multiplying the assessed value of land per acre by the number of lots; then multiplied by .006 for single family developments and by .007 for multi-family developments.

Service Charges and Fees

District residents are charged fees for using facilities and participating in certain recreational programs. Fees are based on the cost of providing the subject service, surveys of comparable services provided by other districts, and resident opinion as to the reasonableness of such fees. The District charges user fees for groups desiring to use its facilities based on whether the organization is a noncommercial recreational group offering services available to the general

public (Schedule A), or whether the group has commercial purposes or is restrictive of participation (Schedule B).

Bille Park, Terry Ashe Recreation Center, and Aquatic Park can be rented for weddings, at a negotiated rate. Indoor facilities are available at the Terry Ashe Recreation Center. Preschool programs cost between \$15 and \$50 per session. Sessions last one to two hours generally and last four weeks. Youth and teen programs cost between \$15 and \$50 per session. Adult/senior programs cost between \$15 and \$50 per session. Fees recover the cost of staff, program materials, and 20 percent to cover administration and overhead. However, the overhead cost of facility maintenance is not included in the fee charged.

ISSUE #3: FINANCING OPPORTUNITIES AND CONSTRAINTS

Special districts continue to face difficult financial times. Proposition 13 reduced property tax revenue received by special districts from \$945 million to \$532 million. To fill the gap, the State Legislature created the Special District Augmentation Fund (SDAF) to provide supplemental income for special districts from 1978 until it was abolished in 1992. Moreover, facing huge deficits in school funding, the State Legislature began a practice of shifting property taxes from local governments to an Educational Revenue Augmentation Fund (ERAF) in each county beginning in 1993-1994. Because non-enterprise districts rely on property tax revenue, annual ERAF shifts continue to impact the ability of park and recreation districts to maintain their infrastructure and services.

The primary financial issues facing the District include:

- **The State budget situation** is having a range of impacts on local governments and special districts. Cuts in funding intended to benefit the State budget may affect operational funding used to develop new recreational programming, as well as funding for maintenance of existing facilities
- **The District lacks a reliable funding source** for developing new facilities, such as the Youth Family Center development on 44 acres off Clark Road in Paradise and renovation of the Terry Ashe Recreation Center. Developer fees are insufficient to support development of new facilities to address the impact.

- **Maintenance and upkeep of the expansion areas** will be an additional recurring cost to the District. As new facilities are developed, the District’s maintenance expenses will correspondingly increase. Future budgeting and financial planning will require attention to these new costs and their control.
- **Worker’s Compensation and Liability Insurance** premiums have been decreasing in the past several years with Worker’s Compensation at \$12,325 in 2008 and Liability Insurance at \$13,088 in 2008. District staff attributes the lower rates to better rebates and fewer accidents.

DETERMINATION 3-3: FINANCING, RATE RESTRUCTURING, CONSTRAINTS AND OPPORTUNITIES	
	<i>The District has been using reserve funding to balance its budget in recent years, and should consider adopting a reserve funding standard. The District should more carefully explore the opportunities for creating benefit assessment districts or other similar funding mechanisms to secure long-term funding for the maintenance and operation of park and recreational facilities. The District should consider increasing programming fees to help cover administrative and overhead costs.</i>

C. MANAGEMENT EFFICIENCIES/COST AVOIDANCE, AND FACILITY SHARING OPPORTUNITIES

ISSUE #1: DISTRICT MANAGEMENT

Paradise Recreation and Park District was incorporated as an independent special district in 1948 under Article 4, Chapter 3, Division 5 of the California Public Resources Code. The District By-Laws provide that the Board of Directors may cooperate with any city, county, district, state, or any subdivision thereof, or federal agency to provide recreational facilities.

District Mission

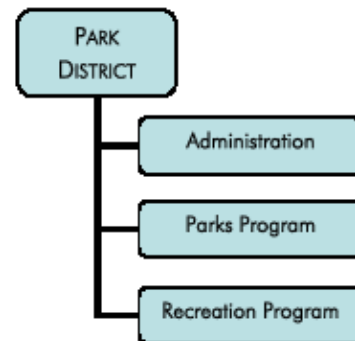
The PRPD’s Mission, as the recreational leader of the community, is to provide a well-rounded selection of recreation and park facilities for all members of the District by enhancing the quality of life through people, parks, and recreation. According to the Paradise Recreation and Park District Mission Statement (2008), the Board of Directors and staff are committed to:

- Offering a diversity of leisure services and activities for all age groups.
- Providing patrons with safe and wholesome recreation activities and park facilities.
- Helping develop a community understanding of a variety of leisure services.

- Staying professionally knowledgeable and informed.
- Dedicating themselves to outstanding community service.
- Keeping programs and facilities safe, clean, and environmentally pleasing.
- Contributing to the physical and mental development of individuals participating in District activities.

District Organization

A General Manager manages all daily administrative aspects, including supervision of programs, maintenance and improvement of park and recreation facilities. Outside of an administrative division, the District has two other primary functions – parks and recreation programs. The recreational program has three supervisors and oversees a broad range of responsibilities. The District also has a parks program responsible for the maintenance and operation of the parks and recreation facilities under the direction of the park superintendent.



ISSUE #2: MANAGEMENT EFFICIENCIES AND COST AVOIDANCE

Staffing Levels and Workload

A District Manager is hired to manage the daily administration of District operations, including organization and supervision of programming, maintenance and improvement of park and recreation facilities. The District maintains its park and recreational facilities with the equivalent of 14 full-time staff. Eight full-time equivalent staff members handle District administration, operations, program development, and management. These include the District Manager, Park Superintendent, three Recreation Supervisors, two full-time support staff, and two part-time support staff. More than 100 part time employees run recreation programs offered by the District. There are plans to create a recreation mid-level management position in the near-future, contingent on both funding and space made available by the cost savings of remodeling (rather than rebuilding) the Terry Ashe Recreation Center.

According to the District Master Plan, staffing levels are inadequate to care for all developed and natural areas under district ownership. Six full-time maintenance staff currently maintain 77.5 acres of developed parkland or 12.9 acres of developed parkland per staff person.

Management Practices

The District anticipates needs and provides needed services and facilities using a master planning process, last updated in 2001, which is coordinated with a capital improvements plan. National and regional standards are used in planning for growth. The Master Plan includes an inventory of existing infrastructure, land, and facilities; identifies current needs; and, provides an estimate of needs between 2002 and 2016. The District also provides guidance to its employees using a personnel manual, revised and adopted in April 2008. The District has retained an independent accountant to create audited financial statements each year.

Financial Practices

The District uses a bidding process for equipment to ensure reasonable costs. Various providers of equipment and professional services are contacted by District staff for proposals, and all contracts are approved by the District Board of Trustees. The District has obtained general liability, automobile liability, and property insurance through the California Association for Park and Recreation Insurance. Workers compensation insurance is carried through the Park and Recreation District Employee Compensation. Pooled insurance providers can involve substantially lower expenditures compared to individual private insurance providers. PRPD's Worker's Compensation and Liability Insurance premiums have decreased in the past several years.

Contract Services

Certain professional services, such as park planning and environmental analysis, are handled through contracts, though the District maintains its own land and facilities with staff.

ISSUE #3: COOPERATIVE AGREEMENTS

Joint-Use Agreements

The PRPD uses joint-use agreements with the Paradise and Golden Feather School Districts to make the most effective use of limited resources. The District currently uses tennis courts,

softball fields, and two gymnasiums during the evening, on weekends, and on days when school is not in session. The School District coordinates programming with the PRPD to provide an after-school recreation program (Discovery Club) at two elementary schools. PRPD intends to coordinate with the two School Districts in various ways to facilitate the upcoming needs of the area.

Concow Elementary School pool is owned and maintained by the Golden Feather Union Elementary School District (GFUESD). PRPD conducts the summer swimming program at the pool and residents in the area enroll in this program—some living within the District and some living outside District boundaries, including residents living within the service boundaries of Feather River Recreation and Park District (FRRPD) and GFUESD. The District collects a fee for participation in this program and reimburses GFUESD to help defer the cost of maintaining the facility. There is a formal agreement with the school district for the use of this facility.

Interagency Cooperation

The District and the Town of Paradise have also worked together to provide recreational programs and park facilities, including the Rails-to-Trails program, which involved the development of a six-mile trail through the Town. Other recreation partners include the Lake Oroville State Recreation Area, the Oroville State Wildlife Area, the Plumas National Forest, Bureau of Land Management, and the Lassen National Forest. The District also works with the CARD, FRRPD, and the Durham Recreation and Park District to provide recreation programming, professional training, and recreation leadership.

Facility Leasing

The District offers senior services in cooperation with the County and service agencies. The District provides meeting facilities for community groups at the Terry Ashe Recreation Center. The District provides sports programs for the disabled in cooperation with the Do-it Leisure agency. The District maintains facility usage agreements to provide additional activities. These include the Paradise Little League, Piranhas Swim Team, Youth Soccer Club, Horseman's Association, Bow Hunters, and Gold Nugget Museum. The District is pursuing shared relationships with the Town of Paradise, Paradise Unified School District, and Butte County.

DETERMINATION 3-4: MANAGEMENT EFFICIENCIES/COST AVOIDANCE AND FACILITY SHARING OPPORTUNITIES

3-4.1: The District has an adequate management structure, but should pursue more comprehensive facility sharing arrangements. Staffing levels are inadequate to care for all developed and natural areas under District ownership and the District should consider using private contractors for certain repetitive and labor intensive activities where cost savings could be achieved.

3-4.2: The residents of the eastern communities of the PRPD, due to geographic/topographic separation, do not currently receive an equitable level of service accessibility in contrast to the resident's of the Paradise Ridge. The PRPD should continue with plans to fully develop Crain Park and increase opportunities for recreational programming in cooperation with the GFUESD and the Thermalito Water and Sewer District (TWSD).

3-4.3: The PRPD should immediately pursue a committed partnership with the GFUESD through the development of a comprehensive joint use agreement for the operation and maintenance of the Concow Pool and the utilization of other school district facilities that have the potential to enhance recreational programs and services.

3-4.4: The PRPD should pursue discussions with the TWSD with the intent of developing an agreement for the limited use of the Concow Reservoir for defined recreational programs and services.

D. LOCAL ACCOUNTABILITY

The District is governed by a five-member Board of Directors elected by the community. The Board of Directors must approve all issues of District policy, including any contracts or leases entered into by the District. The Board has three standing committees:

- Personnel
- Finance
- Recreation and Parks

District Meetings

The Board of Directors meets on the second Tuesday of each month, and agendas are sent to local media providers, various District patrons by request, and posted at the main District business office on the exterior message board within 72 hours of the scheduled meeting. Each meeting has a public comment period, and the public is welcome to attend. The public is also involved in ad-hoc committees, public workshops, and advisory groups, which are topic or project oriented. An average of 12 members of the public attend a typical meeting of the Board

of Directors. The District indicates that all applicable provisions of the Brown Act are adhered to regarding public hearings.

District Operations

District staff are available by phone during normal business hours (Monday through Friday, 8:00 A.M. until 5:00 P.M.) for arrangement of services, requests for information, and other needs. Messages left outside of normal working hours are monitored and returned. Contact information is available on the District's web site and in the Butte County Phone Directory. Annual budget and audit reports are made available to the public. Elected and appointed District officials are identified at the District's public hearings and in District promotional material, such as informational flyers, web site notices, and program guides.

District Advertising

The District prepares an activities guide three times per year and distributes it to schools, local businesses, and newspapers. The District web site provides contact information and information on seasonal programs and events. Special information flyers are also prepared and distributed to promote special or new events and activities to the target audience. Similar print advertisements and public service announcements are periodically prepared to promote certain programs, events, or to promote District services and facilities in general. Finally, a large billboard outside District offices advertises recreational programming.

Customer Accountability

The District has a customer-oriented service philosophy, including written goals and mission statements, master service plans, and outreach programs for its customers. The District conducts community workshops to solicit input on its level of service and parks and recreation needs of the community. The District also compares its services and facilities to accepted national parks and recreation standards to measure success of facilities and service provision. The District also conducts program evaluations, surveying those involved in District programming to gauge the relative success of the program's implementation.

DETERMINATION 3-5: LOCAL ACCOUNTABILITY	
	<i>The District provides the public with adequate information and opportunity for input and involvement in District activities.</i>

E. GOVERNMENT STRUCTURE

Government structure analysis addresses the suitability of the physical boundaries of the District, potential changes to their location and extent, and the political appropriateness of District boundaries. This includes an analysis of the logic of the existing and planned District boundaries, and thus opportunities to provide service in a more efficient or cost-effective manner.

Underserved Areas

Several communities within or near Paradise Recreation and Park District are underserved—Butte Creek Canyon, Magalia/Paradise Pines, Concow/Yankee Hill, and Stirling City (located outside the District). The Butte Creek Canyon area is located in the westernmost portion of PRPD. The District does not have parks in Butte Creek Canyon area, but provides support to community groups that provide leisure programming to residents. The Magalia and Concow/Yankee Hill areas of the District are also underserved, so the District maintains joint-use agreements with school districts in these areas to provide some recreational opportunities. The Master Plan establishes Butte Creek Canyon, Magalia, and Concow/Yankee Hill areas as a priority for park and recreational facilities. People living in Stirling City, outside PRPD, are not served by a park and recreation district. Stirling City residents typically drive down the Skyway through Paradise for services. The 20-acre privately-owned Merlo Park, which is located on the southeast side of Stirling City, is available for use by residents of Stirling City. The park contains a wide variety of trees, three large ponds, individual and group picnic areas, nature trails, meadows, horseshoe pits, a bocce court, restrooms, and an outdoor wedding chapel. Merlo Park is typically open from May through September.

As of February 2009, the PRPD is taking steps to better serve these areas. In the Butte Creek Canyon area, a land acquisition is being considered for a possible future park site. The District is also working with the Magalia Community Ad Hoc Committee in developing a site plan for a

new park in Magalia. In the Concow/Yankee Hill area, PRPD is currently working with the Golden Feather Alliance Community Group and the California State University, Chico, Designing Program, to develop recommended park improvements at Crain Park.

A particular focus is the Concow Elementary School pool, which has raised considerable discussion in recent years. The Concow Elementary School pool was financed and built by the Golden Feather Union Elementary School District. Paradise Recreation and Park District has a usage agreement with the School District for the pool during the summer months, and contributes to the maintenance of the pool. GFUESD has been unable to adequately maintain the pool, however, and the pool has accumulated significant deferred maintenance over time. PRPD has been working with the Golden Feather Alliance Community Group to identify and remedy concerns regarding the pool.

Appropriateness of District Boundaries

The District's boundaries and Sphere of Influence (SOI) are coterminous and include the Town of Paradise, and surrounding unincorporated areas, including the unincorporated communities of Magalia/Paradise Pines, Butte Creek Canyon, and Concow/Yankee Hill. Butte Creek Canyon residents located east of Chico have direct access to CARD and the Chico area via Centerville Road and Skyway, but must backtrack 12 miles to Paradise. Butte Creek Canyon residents are closely tied to the Chico area either through shopping, employment, or participating in CARD programs via the Chico Unified School District. Stirling City residents have direct access to Paradise services, but are located outside their tax rate area. Because of logistics and access to services, PRPD could provide services more efficiently to Stirling City, while CARD may better serve the Butte Creek Canyon area. However, both detachment and annexation proceedings consider the sentiments of the residents in the area and will require application by one or both Districts.

Certain parties have proposed a district boundary modification between Paradise and Feather River Recreation and Park Districts to address the Concow Elementary School pool; however, this MSR does not recommend such a change. Neither District appears legally obligated to fund the pool since it was built by Golden Feather Union Elementary School District and no formal agreement exists for its maintenance. Also, a boundary change would not address the significant

deferred maintenance on the pool and the desirability of maintaining the pool given declining demand for pool services. The pool directly benefits the residents of a limited portion of both Districts, and dedicating PRPD revenues to such a small area may raise questions of equity. The Concow Elementary School pool issue could be better resolved by the development of a benefit assessment district covering the properties that directly benefit from this service.

DETERMINATION 3-6: GOVERNMENT STRUCTURE	
	<i>The District should consider detachment proceedings for Butte Creek Canyon if there is support among the majority of residents. The District should also consider Stirling City for annexation. The District should either establish a formal agreement with the Golden Feather Union Elementary School District to maintain the Concow Elementary School pool or investigate the feasibility of a benefit assessment district for the pool.</i>

3.1.3 SUMMARY OF DETERMINATIONS

DETERMINATION 3-1: GROWTH AND POPULATION FOR THE AFFECTED AREA	
	<i>The population in the District is expected to grow at a rate of 1.1 percent.</i>
DETERMINATION 3-2: PRESENT AND PLANNED CAPACITY OF PUBLIC FACILITIES AND ADEQUACY OF PUBLIC SERVICES, INCLUDING INFRASTRUCTURE NEEDS AND DEFICIENCIES	
	<p>3-2.1: <i>The District uses appropriate methods to gauge the need for, fund, and provide parkland, recreational facilities, and recreational programming to meet the needs of the community and has sufficient land holdings to accommodate future needs, though these land holdings are not necessarily in locations that are suitable with respect to accessibility and existing and future populations. The District provides adequate levels of service for parks and recreational facilities except in outlying areas such as Butte Creek Canyon and the eastern communities of Concow and Yankee Hill. The District has prioritized parkland development in Magalia/Paradise Pines, Butte Creek Canyon, and the Concow area, and the District should also acquire and develop parkland in the Yankee Hill area if population growth occurs.</i></p> <p>3-2.2: <i>In order to more effectively define service areas, the SOI boundary between the PRPD and FRRPD is to be redrawn to place all lands north and east of the North Fork Feather River and the territory north of Durham-Pentz Road (including Spring Valley School) into the PRPD service area.</i></p> <p>3-2.3: <i>Crain Park does not currently provide a reasonably maintained or equipped facility to the community and will require significant investment to function as a full-service community park site. Short of a full improvement plan, PRPD could provide a program at Crain Park similar to PRPD’s “Camp Coutolenc,” located at Coutolenc Park in Magalia, which offers a variety of outdoor activities including archery, crafts, camp cooking, sports and games, hiking, camp safety, and environmental awareness.</i></p> <p>3-2.4: <i>The PRPD should immediately pursue a committed partnership with the GFUESD through the development of a comprehensive joint use agreement that would allow for the use of school district facilities that have the potential to enhance recreational programs and services in the PRPD’s eastern communities’ service area.</i></p>
DETERMINATION 3-3: FINANCING, RATE RESTRUCTURING, CONSTRAINTS AND OPPORTUNITIES	
	<i>The District has been using reserve funding to balance its budget in recent years, and should consider adopting a reserve funding standard. The District should more carefully explore the opportunities for creating benefit assessment districts or other similar funding mechanisms to secure long-term funding for the maintenance and operation of park and recreational facilities. The District should consider increasing programming fees to help cover administrative and overhead costs.</i>

DETERMINATION 3-4: MANAGEMENT EFFICIENCIES/COST AVOIDANCE AND FACILITY SHARING OPPORTUNITIES

3-4.1: The District has an adequate management structure, but should pursue more comprehensive facility sharing arrangements. Staffing levels are inadequate to care for all developed and natural areas under District ownership and the District should consider using private contractors for certain repetitive and labor intensive activities where cost savings could be achieved.

3-4.2: The residents of the eastern communities of the PRPD, due to geographic/topographic separation, do not currently receive an equitable level of service accessibility in contrast to the resident's of the Paradise Ridge. The PRPD should continue with plans to fully develop Crain Park and increase opportunities for recreational programming in cooperation with the GFUESD and the Thermalito Water and Sewer District (TWSD).

3-4.3: The PRPD should immediately pursue a committed partnership with the GFUESD through the development of a comprehensive joint use agreement for the operation and maintenance of the Concow Pool and the utilization of other school district facilities that have the potential to enhance recreational programs and services.

3-4.4: The PRPD should pursue discussions with the TWSD with the intent of developing an agreement for the limited use of the Concow Reservoir for defined recreational programs and services.

DETERMINATION 3-5: LOCAL ACCOUNTABILITY

The District provides the public with adequate information and opportunity for input and involvement in District activities.

DETERMINATION 3-6: GOVERNMENT STRUCTURE

The District should consider detachment proceedings for Butte Creek Canyon if there is support among the majority of residents. The District should also consider Stirling City for annexation. The District should either establish a formal agreement with the Golden Feather Union Elementary School District to maintain the Concow Elementary School pool or investigate the feasibility of a benefit assessment district for the pool.

4.0 SPHERE OF INFLUENCE ANALYSIS

As described in Section 1.2, LAFCO is required to consider and prepare written statements addressing the four factors enumerated under California Government Section Code 56425(e), which include present and probable land uses in the area, present and probable need for public facilities and services, the present capacity of facilities and adequacy of services, and the existence of social or economic communities of interest. An analysis of each of these factors is provided in the following sections.

4.1 PRESENT AND PLANNED LAND USE

In order to achieve an accurate overview of the growth and development potential within the District, a number of factors need to be considered. The following factors, when considered together, reflect the existing development within the District and also provide a picture of existing development potential.

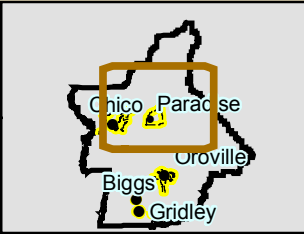
- Land use designations, including existing and any proposed changes
- Special land use limitations, including the Williamson Act, Timber Preserve Zoning and designated open spaces
- Improved and unimproved parcels

Land Use Designations

The Paradise Recreation and Park District includes the incorporated Town of Paradise and unincorporated areas of Magalia/Paradise Pines, Butte Creek Canyon, and Concow/Yankee Hill. The Town of Paradise covers 11,542 acres, or approximately 11 percent of the District, and includes various densities of residential, commercial, and industrial zones (Figure 4-1). The remaining land uses within the District occur in the unincorporated areas and include various Timber, Agricultural, Residential, Commercial, Industrial, Foothill Recreation, and Resource Conservation zoning districts (Table 4-1).

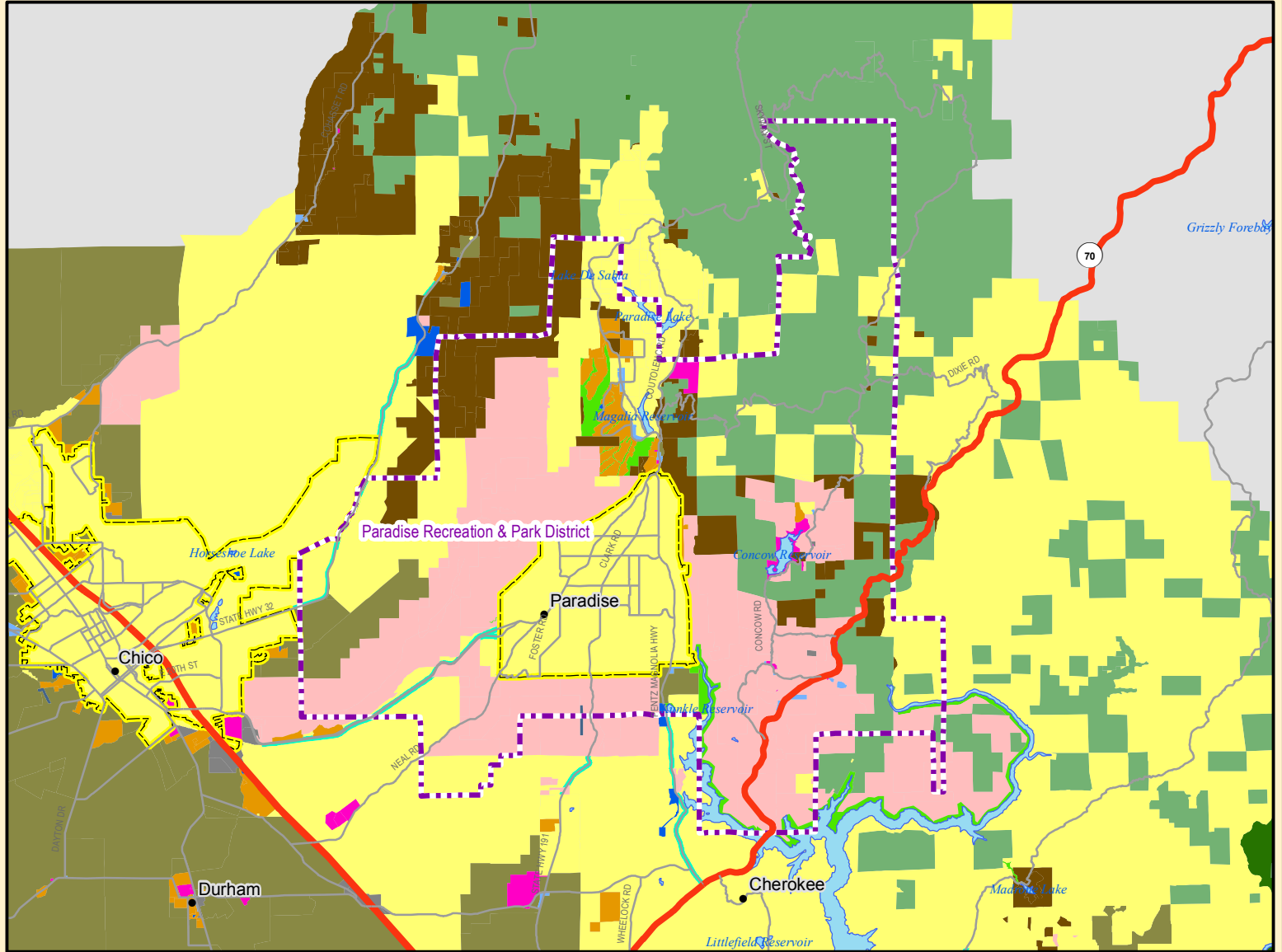
Land use within the Town of Paradise is guided by its 1994 General Plan, which described the land use pattern as “well established and unlikely to experience major changes” throughout its 15-year planning horizon. (The Town is currently in the beginning stages of planning an update

Butte County



Legend

- Recreation & Park Districts
- Highways
- Secondary Roads
- City Limits
- Waterbodies
- Zoning Designations**
- Unclassified or Unknown
- Agricultural
- Airport
- Commercial Forestry
- Commercial
- Foothill Recreational
- Industrial
- Residential
- Planned Unit Development
- Public, Quasi-Public
- Resource Conservation
- Scenic Highway
- Sports/Entertainment
- Timber Mountain
- Timber Preserve



Paradise Recreation & Park District Zoning Designations

BUTTE LOCAL AGENCY FORMATION COMMISSION



Kleinschmidt
 Energy & Water Resource Consultants
 251 South Auburn St., Suite C
 Grass Valley, CA 95945
 Telephone: (530) 852-4837
 Fax: (530) 852-4837
 www.KleinschmidtUSA.com

Source: Butte LAFCO

Service area boundaries and sphere of influence boundaries are based on best available data, are provided for general representational purpose only, and should not be considered final LAFCO approved boundaries

to its General Plan.) New development in the Paradise area is severely constrained, in large part by the area’s steep mountain/canyon topography, but also because it lacks municipal sewer facilities and has poor soils for septic tanks. There are no moderate to substantial size residential developments planned within the Town’s existing limits, according to the Town’s Community Development/Planning Director. Further, an MSR for the Town of Paradise, completed in 2007, notes that the Town “has experienced a slow rate of growth in the past, and this trend is expected to continue into the future.” The 2005 MSR for Recreation and Park Districts anticipates that new housing in the Paradise area will be primarily through small infill projects within the Town limits and in development occurring outside the Town’s current boundary, primarily to the south. As is discussed below, the unincorporated areas contiguous with the Town’s southern perimeter are being further studied as the County updates its General Plan. One of these study areas coincides with the Southeast Paradise Area Specific Plan, which is currently being processed by the Town. It is not currently anticipated that the planning effort will result in any substantial increase in residential development potential.

Eighty-nine percent of the District’s lands are under the jurisdiction of Butte County. Growth patterns and future development within the unincorporated areas of the County are guided by the County’s General Plan. More specifically, the County’s Zoning Code provides regulatory oversight and establishes future land uses. It should be noted that Butte County is nearing completion of the update to its 1979 General Plan. However, it is not anticipated that the Butte County General Plan 2030 will result in significant changes in the land use designations and zoning within the District boundaries.¹⁰ The current General Plan designation and zoning is identified in the table below.

TABLE 4-1: BUTTE COUNTY LAND USE DESIGNATIONS AND ZONING WITHIN THE PRPD

GENERAL PLAN LAND USE DESIGNATION	ACREAGE		ZONING	ACREAGE
Agricultural/Residential	16,823.8		Agricultural	2,689.4
Commercial	1,012.2		Agricultural Residential	3,178.5
Foothill Area Recreational	12,548.7		Airport	12.2
Grazing and Open Land	26,648.8		Commercial	183.1

¹⁰ Butte County Board of Supervisors South County Preferred Land Use Alternative map with Land Mixes.

GENERAL PLAN LAND USE DESIGNATION	ACREAGE		ZONING	ACREAGE
High Density Residential	595.8		Foothill Recreational	33,871.9
Industrial	43.9		Highway Commercial	150.5
Low Density Residential	6,700.5		Industrial	26.8
Medium Density Residential	4,805.1		Mobile Home Park	20.3
Public/Quasi-Public	3,097.4		Planned Unit Development	30.3
Timber Mountain	33,573.6		Public, Quasi-Public	1,573.9
Water	246.5		Residential	2,272.8
			Resource Conservation	1,813.2
			Scenic Highway	543.9
			Suburban Residential	169.5
			Timber Mountain	10,259.5
			Timber Preserve	22,834.4
			Town of Paradise	11,542.2
			Unclassified	14,923.9
Total (acres)	106,096		Total (acres)	106,096

As part of the County’s Draft General Plan 2030 process, an Alternatives Evaluation Report was completed to evaluate three different land use alternatives, made up of 31 separate study areas located in unincorporated parts of the County. Five of these study areas are located within PRPD’s boundaries, four south of the Town of Paradise and one to the north, and they are expected to contain new growth within the District. The Town itself was not included, because it is not expected to experience any significant growth. While no decisions have been reached yet, the Report summarizes the development potential of each study area under each land use alternative over the next 22 years, offering minimum and maximum numbers of potential new housing units. All five study areas are also located within the Town of Paradise’s Sphere of Influence, and it is likely that future developments adjacent to the Town will be annexed in as they occur.

The five study areas identify a buildout potential of 3,220 dwelling units in the area surrounding the Town of Paradise. Together, the four study areas located south of the Town of Paradise comprise approximately 7,515 acres, with potential new housing development ranging from a minimum of approximately 620 to a maximum of 1,820 units. The Magalia/Paradise Pines study

area, to the north of the Town, consists of 6,700 acres and, depending upon which alternative is chosen, new housing development will range from a number that is not “significant” to a high of 1,400 units. It should be noted that these land use alternatives have not yet been adopted by the County Board of Supervisors, and will be subject to change until final adoption of the County’s General Plan 2030.

Williamson Act

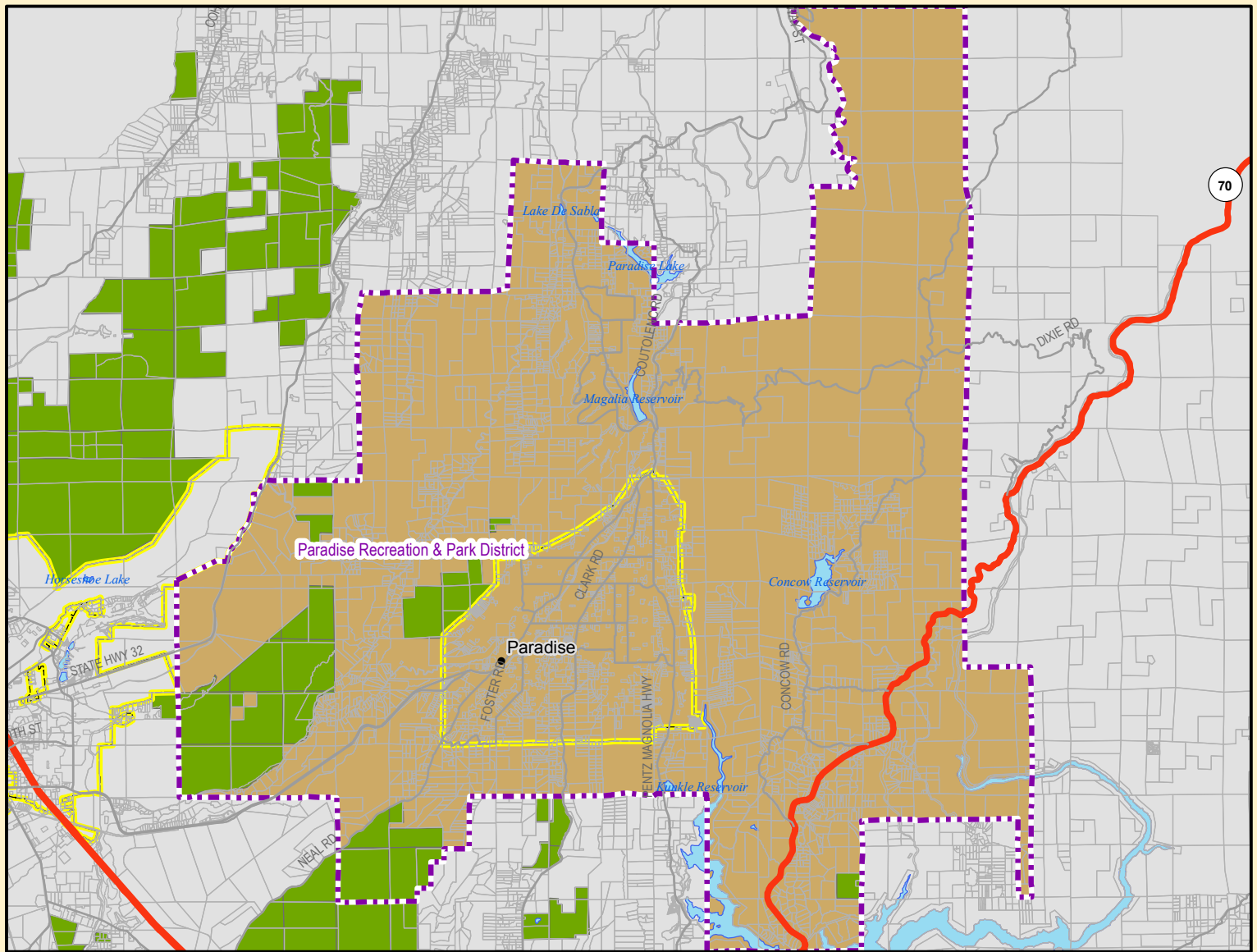
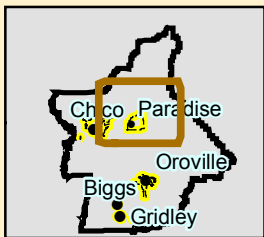
The District contains 29 parcels, totaling 7,338 acres, that are currently under Williamson Act contract with the County (Figure 4-2). Williamson Act contracts are established between landowners and the County, and are a type of tax incentive that limits the uses of the lands to agriculture. However, single-family residences remain an allowed use. Once the Williamson Act contract has been established, land remains under contract for a minimum of 10 years, and in perpetuity thereafter unless application for cancellation is made and approved by the County Board of Supervisors. Butte LAFCO Policy 3.1.11 provides guidance relative to the inclusion of lands that are subject to Williamson Act contract in SOIs. The Policy states that LAFCO shall not approve changes to SOIs to include Williamson Act lands if the annexing agency has the ability to provide infrastructure sufficient to promote development of those properties. Although there are exceptions to this Policy provided specified conditions are met, the District does not provide urban services that encourage development.

Improved and Unimproved Parcels

Approximately 3,144 of the District’s 20,488 parcels are unimproved, the majority of which are zoned for timber production and management, or as Foothill Recreation. Together, Timber Mountain, Timber Preserve, and Foothill Recreation account for approximately 63 percent of the parcels in the District. While Foothill Recreation uses include “agricultural uses, mining and excavating, and pedestrian, equestrian and bicycle trails,” the designation also allows single-family dwellings at rural densities (ranging from 1 to 160 acres), as does the Timber Mountain designation. Parcels zoned as Timber Preserve are primarily for growing and harvesting timber, have a minimum parcel size of 160 acres, and any housing units must be “compatible to timber uses.”

Figure 4-2

Butte County



Legend

- Recreation & Park Districts
- Highways
- Secondary Roads
- City Limits
- Waterbodies
- Williamson Act

**Paradise Recreation & Park District
Williamson Act Parcels**

BUTTE LOCAL AGENCY FORMATION COMMISSION

0 1.5 3 6
Miles

Kleinschmidt
Energy & Water Resource Consultants

251 South Auburn St., Suite C
Grass Valley, CA 95945
Telephone: (530) 852-4837
Fax: (530) 852-4837
www.kleinschmidtUSA.com

Source: Butte LAFCO

Service area boundaries and sphere of influence boundaries are based on best available data, are provided for general representational purpose only, and should not be considered final LAFCO approved boundaries

Approximately six percent of the remaining unincorporated lands are designated for various densities of residential development, including the study areas discussed above. With the Town of Paradise expected to continue its slow rate of growth, nearly all new housing and commercial development within the 20-year planning horizon of the General Plan 2030 is expected to occur within the Town’s current SOI, along its southern border and in the Magalia/Paradise area.

DETERMINATION 4-1: PRESENT AND PLANNED LAND USE	
	<i>No significant change in land uses within the District is anticipated over the next 20 years. While the County’s Draft General Plan 2030 is still in the planning process, a land use alternative has been developed that could increase the potential buildout within the Town of Paradise’s SOI by as many as 3,220 dwelling units. However, no change in land use has been adopted as of the writing of this document.</i>

4.2 PRESENT AND PROBABLE NEED FOR PUBLIC SERVICES AND FACILITIES

The Paradise Recreation and Park District’s populations are concentrated in the Town of Paradise (population estimated at 26,368¹¹ on January 1, 2008) and unincorporated areas of Magalia/Paradise Pines, Butte Creek Canyon, and Concow/Yankee Hill. Population within the District remains relatively stable, with no substantial change in numbers anticipated. The foothill regions, and Paradise in particular, have a high percentage of seniors, which make up 25 percent of PRPD’s population. The District offers programming for preschool through senior age groups, including team sports, aquatics, preschool programs, and seasonal family events. The District estimated that it served approximately 55,000 residents through its programs in 2000¹².

With its Master Plan 2002–2016, PRPD established as its goal a standard of 5 acres of developed parkland for every 1,000 people. The District operates and manages 431 acres of parkland within its service area, but only 77.5 acres of this are developed. While PRPD owns more than sufficient parkland to meet resident needs through 2030, the District will need to increase its developed parkland by 126 acres to meet its projected 2010 needs, and 176 acres by 2030. The following table provides approximate needs for developed parkland in order for the District to maintain its goal of 5 acres per 1,000 people.

¹¹ California Department of Finance 2008.

¹² Paradise Recreation and Park District Master Plan 2002–2016.

TABLE 4-2: FUTURE PARKLAND NEEDS BASED ON ESTIMATED POPULATION GROWTH

YEAR	ESTIMATED POPULATION PROJECTIONS	TOTAL PARKLAND NEEDS (ACRES)	TOTAL PARKLAND DEFICIT	DEVELOPED PARKLAND DEFICIT
2010	40,673	203	+229	-126
2015	42,922	215	+217	-138
2020	45,335	227	+205	-150
2025	47,884	239	+193	-162
2030	50,576	253	+179	-176

The following subsections summarize the various areas served by the District and how changes in population growth and development will affect the existing need for services.

Town of Paradise

Within the Town of Paradise limits, the District owns and operates approximately 103 acres of parkland (54.5 of which are unimproved) featuring a variety of facilities, including two neighborhood parks and four community parks, which are listed in Table 3-1 and described in greater detail in Section 4.3. PRPD’s business offices occupy 970 square feet of the 6,000-square-foot Terry Ashe Recreation Center, which is badly in need of renovation and expansion and for which the District is currently planning a complete remodel. The District and the Town of Paradise work cooperatively and together they provide adequate recreational facilities and programming to Town residents. However, as the Town grows further into the District’s current boundaries, particularly into the areas south of the Town, the potential for overlapping or duplication of services also grows. The MSR for the Town of Paradise recommended that the Town and District work collaboratively to develop a master plan, or that the Town consider establishing its own Parks Department.

The District also has entered into a joint venture with the Town of Paradise, along with the Paradise Unified School District and four other organizations, to form a non-profit partnership for the purpose of master planning and development of 44 acres within the Town limits. Plans for the multi-use project, called the Paradise Community Village Project, include development of low-income housing and other dwelling units, a charter school, a Boys and Girls Club, and a skate park.

Magalia/Paradise Pines

Although PRPD has more parkland in the Magalia/Paradise Pines area than in any other community it serves, Magalia was identified in the 2005 MSR as an underserved area. This is because the 320-acre Coutolenc Park consists of 300 acres of primarily undeveloped open space with a 20-acre archery range. Moreover, while Coutolenc Park is located only a few miles from Magalia, it is located on the other side of a canyon that, in effect, makes the community's only park virtually inaccessible to its residents. As the second-most populous community in the District, and with the potential for an additional 400–1,400 new housing units, Magalia is in need of accessible, developed parkland and recreational facilities.

Development impact fees will offset a small portion of the funding needed to acquire and develop additional parkland in Magalia, according to PRPD's District Manager; however, grants and District Reserve funds will be the primary funding sources. To this end, the District is actively seeking grants and preliminary planning has begun. District annual revenues are currently adequate to handle a moderate level of increase in operational cost.

In another project, the District is working with Paradise Irrigation District on a joint agreement, and an ad-hoc committee is looking at property for park development in Magalia. PRPD is also applying for the third time (the first two applications were denied) for a grant to develop the existing rough trails in Coutolenc Park. In addition, the Paradise Unified School District (PUSD) has 55 acres in Magalia set aside for the development of a future high school and has had discussions with PRPD to plan the development of athletic fields and a passive/active park on the site. PRPD would eventually like to work with PUSD on this concept; however, school attendance there has been dropping and development has slowed recently with the economic downturn.

Butte Creek Canyon

The District does not currently have any parkland or facilities in Butte Creek Canyon, which consists primarily of privately owned lands and is entirely zoned Foothill Recreational with predominantly two- and five-acre minimum designations. It was identified in the 2005 MSR as an underserved area. However, PRPD provided \$10,000 to the Lookout Point project, which was

identified as a priority in a public survey, and contributed financial assistance for maintenance to the Centerville Recreation and Historical Association. There is also a county-owned park at the Honey Run Covered Bridge, for which PRPD contributes funding for maintenance. According to a survey conducted by the Butte Creek Canyon Advisory Committee, area residents are interested in “limited, locally managed recreation facilities,” and the Committee recommended that PRPD consider acquiring property there in anticipation of moderate population growth.

*Concow/Yankee Hill*¹³

The Concow area, also identified in the 2005 MSR as an underserved area, lies within PRPD’s current boundaries but outside the Town of Paradise’s SOI. The Butte County General Plan 2030’s Alternatives Evaluation Report identified the Concow area as a study area that is expected to experience significant population growth. Depending on which of the land use alternatives is chosen for the 2,470-acre Concow study area, new housing development could range anywhere from a number of units that is not “significant” to a high of 500 units. Under one land use alternative, the General Plan 2030 would designate the entire area as “Resource Conservation,” which would result in negligible growth. The other two alternatives would allow for either 200 or 500 new housing units in the area. Of note, the summer of 2008 brought catastrophic fires to this region of Butte County. While it is not yet known what, if any, impacts to land use plans for the area will be, it has unquestionably shown this area to be hazardous for wildfires.

At a community meeting for the Butte County General Plan 2030 held in Concow in 2007, residents noted that while the Concow Reservoir offers “plentiful recreational opportunities,” it is not easily accessible. They also agreed that Crain Park, the only park owned by PRPD in the Concow area, needs maintenance. The District is in the preliminary planning stages for making improvements to the eight-acre, mostly undeveloped park and is seeking grant funding to do so.

PRPD also provides summer programming at the Concow Elementary School pool via a usage agreement with the Golden Feather Union Elementary School District, which financed and built

¹³ It should be noted that residents of these neighboring foothill communities generally consider them together as a single area, referred to as the “Golden Feather Area.” A citizens group, the Golden Feather Community Alliance, was formed in 2006 to advocate for the area residents’ interests.

the pool. PRPD also provides some maintenance, as GFUESD has not been able to adequately maintain the pool. As noted in the 2005 MSR, a boundary modification between PRPD and Feather River Recreation and Park District has been suggested by some parties as a way to address the problem of deferred maintenance. The MSR did not find that such a change would solve the problem; and instead recommended that a benefit assessment district be formed, covering only those properties in both Recreation and Park Districts that directly benefit from the pool services.

The District does not currently own or operate any parkland or facilities in the small rural community of Yankee Hill, which is located south of Concow and outside of the Town of Paradise’s SOI. Under the existing 1995 General Plan, it is designated predominantly Foothill Area Recreational. Zoning in this area is also primarily Foothill Recreational with 5- and 10-acre minimum parcel size designations, as well as several small commercially zoned areas along the Highway 70 corridor. There are currently no land use changes proposed for the area under the General Plan 2030 and it was not included as a study area in the Alternatives Evaluation Report. However, both the PRPD Master Plan and the 2005 MSR expect some degree of growth in Yankee Hill over the next decade. The Master Plan recommends the District acquire and develop three to five acres of parkland in anticipation of future growth, or at such time when population growth there warrants it; the MSR recommends doing so *if* such growth occurs.

DETERMINATION 4-2: PRESENT AND PROBABLE NEED FOR PUBLIC SERVICES AND FACILITIES	
	<p><i>With Magalia/Paradise Pines, Concow, and Butte Creek Canyon already identified as underserved areas by the 2005 MSR, and all expected to experience varying degrees of population growth, it is recommended that the District consider the acquisition and development of new parkland and facilities in these areas a priority, along with improvements to the existing park in Concow. The District should watch population growth in the Yankee Hill area and solicit community input to see if acquiring parkland there is warranted.</i></p> <p><i>A staff position should be added, or existing staff and volunteers should be dedicated, for the purpose of pursuing grants, donations, and other funding mechanisms for the acquisition and development of additional parkland and facilities.</i></p> <p><i>The Town of Paradise and the District should work together to develop a formal written agreement regarding their current and future overlapping boundaries and service areas.</i></p>

4.3 PRESENT CAPACITY OF FACILITIES

The District maintains the equivalent staffing level of 14 full-time employees and plans to create a recreation mid-level management position in the near future, contingent on both funding and space made available by the cost savings of remodeling (rather than rebuilding) the Terry Ashe Recreation Center. The PRPD currently operates and manages 431 acres of parkland, of which only 77.5 acres are developed. The District has established a goal of 5 acres of developed parkland for every 1,000 residents, less than the 6–10 acres per 1,000 people suggested by the National Park and Recreation Association (NRPA). PRPD also takes into consideration demographics, utilization rates, and facilities and programming provided by the Town, schools and other organizations within its service area.

PRPD works to inform and involve area residents, and utilizes volunteers and interns from the public, Butte College, CSU Chico, and the Paradise High School. Its Board of Directors holds monthly board meetings at which the public is welcome. PRPD maintains a website, staffs phones during normal business hours, and distributes programming and activity schedules and other informational materials regularly. To solicit residents' input, the District has conducted community workshops and distributed evaluations and surveys.

The District maintains joint-use agreements and works cooperatively with numerous local agencies and organizations to provide recreational activities, events, sports, facilities, and meeting space for clubs. PRPD has long maintained a joint-use agreement with the Paradise Unified School District to share the use and maintenance of facilities and programming. The District is also working in partnership with the Town of Paradise on the Paradise Community Village Project. PRPD works with the County of Butte and other agencies in the community to provide vital services for senior citizens and also works with the non-profit Do-It Leisure to provide recreational activities for the developmentally disabled. Some of the other organizations with which PRPD has cooperative agreements include the Bureau of Land Management, Paradise Ridge Youth Soccer Club, Paradise Bowhunters, Paradise Horsemen's Association, Honey Run Covered Bridge Association, the Centerville Recreation and Historical Association, Gold Nugget Museum, Paradise Symphony, and Odyssey Productions Inc. (Ropes Course). The District is currently working on developing a dog park at Moore Road Park, a Disc Golf course at Coutolenc Park, and a Skate Plaza at the Terry Ashe Recreation Center Park.

The District has over 100 acres of parkland and various facilities within the Town of Paradise limits. Neighborhood parks include the 55-acre Bille Park, for which improvements to 19 acres were recently completed, including a playground, picnic area, and nature trail; and the 17-acre Oak Creek Park with walking trails. There are also four community parks in the Town limits, listed below with some of their facilities:

- Terry Ashe Recreation Center (3.5 acres): 6,000-square-foot recreation center with PRPD business office, playground, picnic area
- Paul Byrne Aquatic Park and Rotary Grove Park (5 acres): swimming pool, recreation building, playground, volleyball courts, horseshoe pit
- Moore Road Park (19 acres): Playground, ball fields and bleachers, horse riding arena
- Paradise Memorial Park (2 acres): Gold Nugget Museum, barbeque area

In the Magalia/Paradise Pines community, PRPD currently has a 20-acre archery range and some rough hiking trails and picnic areas at the 320-acre Coutolenc Park. The District also has a joint-use agreement with the Mountain Ridge Middle School in Magalia for use of its multi-purpose facility.

The District does not own or operate any parkland facilities in Butte Creek Canyon, but it does provide financial assistance to the Centerville Recreation and Historical Association. There is also a county-owned park at the Honey Run Covered Bridge, for which PRPD contributes funding for maintenance, and the 2005 MSR notes that PRPD “provides support to community groups that provide leisure programming to residents.”

The District has one park in the Concow area, Crain Park, which is mostly undeveloped. PRPD is in the preliminary planning stages for making improvements to the eight-acre park and is seeking grant funding to do so. PRPD also offers recreational programming at the Concow Elementary School pool during the summer months via a usage agreement with the Golden Feather Union Elementary School District (GFUESD).

The District does not own or operate any parkland or facilities in the rural community of Yankee Hill, which is located in the southeastern part of the District and outside of the Town of Paradise

SOI. However, the area is expected to grow, and PRPD’s Master Plan calls for acquiring three to five acres of parkland in the Yankee Hill in anticipation of future growth, or at such time when population growth there warrants it.

DETERMINATION 4-3: PRESENT CAPACITY OF FACILITIES	
	<p><i>The present capacity of District facilities within the Town of Paradise appears to be sufficient for the current population. As population growth occurs in the areas south of the Town over the next 20 years, additional parkland and facilities will be required to meet the anticipated increase in demand for services.</i></p> <p><i>The District does not currently have adequate developed parkland and facilities to serve the communities of Magalia/Paradise Pines, Butte Creek Canyon, and Concow/Yankee Hill, all of which are anticipated to experience some degree of population growth. To provide adequate opportunities for the existing population, and to plan for future growth, additional parkland should be acquired and existing parkland improved. The District has plans for several properties for park creation that should be purchased.</i></p> <p><i>Presently, staffing for the District appears adequate for day-to-day functions. However, staff should be added as facilities are developed and parkland is acquired to provide maintenance, regular programming, and recreational services and as noted in Determination 4-2 to address obtaining grants.</i></p> <p><i>Assessments or grant funding should continue to be sought and obtained to provide adequate funding for the acquisition and development of recreational facilities.</i></p>

4.4 SOCIAL AND ECONOMIC COMMUNITIES OF INTEREST

The largest community center in the District is the incorporated Town of Paradise, a community of approximately 26,368 people. Other communities in the District include Magalia/Paradise Pines, Butte Creek Canyon and Concow/Yankee Hill.

Magalia/Paradise Pines

The Magalia/Paradise Pines community is the second-most populous area served by the District, with an estimated 15,000 residents. It was identified in the 2005 MSR as an underserved area. The County’s General Plan 2030, which has not yet been finalized, identified a buildout potential of as many as 400–1,400 additional housing units. PRPD’s only park in the area, Coutolenc Park, consists of 320 acres of mostly undeveloped open space, and the park is not easily accessible to residents due to topography. The District also has a joint-use agreement with the Mountain Ridge Middle School in Magalia for use of its multi-purpose facility. The District has

various plans to acquire and develop additional parkland in the area, including a joint agreement with Paradise Irrigation District for park development, a grant application to improve the trails and develop a Disc Golf course in Coutolenc Park, and hopes to develop athletic fields and a passive/active park on land that PUSD has set aside for a future high school in Magalia.

Butte Creek Canyon

The Butte Creek Canyon area consists primarily of privately owned lands and is entirely zoned Foothill Recreational with predominantly two- and five-acre minimum designations. The District does not currently own any parkland or facilities in the area, and it was identified in the 2005 MSR as an underserved area. However, PRPD provides some financial assistance for maintenance of historical sites in Butte Creek Canyon, and services for community recreation. Residents, responding to a survey conducted by the Butte Creek Canyon Advisory Committee, reported an interest in “limited, locally managed recreation facilities.” The Committee recommended that PRPD consider acquiring property and partnering with public land agencies to provide additional services.

Concow/Yankee Hill

The community of Concow was identified in the 2005 MSR as an underserved area, and is expected to experience significant growth. The District has an eight-acre park in Concow, Crain Park, which is mostly undeveloped. PRPD is in the preliminary planning stages for making improvements to the park and is seeking grant funding to do so. It is also working with the Golden Feather Community Alliance on this effort. PRPD also offers recreational programming at the Concow Elementary School pool during the summer months via a usage agreement with Golden Feather Union Elementary School District (GFUESD).

The District does not currently own any parkland or facilities in the rural community of Yankee Hill, a sparsely populated community south of Concow. PRPD’s Master Plan calls for the District to acquire and develop three to five acres of parkland in the Yankee Hill area—either when population growth there warrants it, or before that, in anticipation of eventual needs.

Stirling City

Stirling City is a small, unincorporated community of approximately 300, located to the north of the District and outside of its current boundaries. The community, which is completely surrounded by land zoned as Timber Preserve, is not within the boundaries or sphere of influence of any Recreation and Park District. It was identified in the 2005 MSR as an underserved area that may benefit from annexation into the PRPD. The MSR noted that residents of Stirling City “have direct access to Paradise services, but are located outside their tax rate area.” For this reason, the MSR concluded that it would be most logical for PRPD to provide recreation services to Stirling City.

Senior Citizens

Senior citizens already account for a high proportion, approximately 25 percent, of the District’s population. As the District’s Master Plan points out, this demographic is expected to grow even larger with the retirement of the aging—and more-active—“baby boomer” generation, and they must be considered by PRPD when planning its facilities and services. While the District manager remarked on the low utilization rate of seniors—only 11 percent—he also acknowledged the need for programming and services specifically tailored to the senior community’s needs. Additionally, PRPD’s Master Plan notes that programming and facilities for active seniors will continue to be a priority for the District, and PRPD will solicit their input on how best to meet their needs.

DETERMINATION 4-4: SOCIAL AND ECONOMIC COMMUNITIES OF INTEREST	
	<p><i>It is recommended that the community of Stirling City be included in the Paradise Recreation and Park District’s SOI for future annexation into the District.</i></p> <p><i>In order to more effectively define service areas, the SOI boundary between the PRPD and FRPD is to be redrawn to place all lands north and east of the North Fork Feather River and the territory north of Durham-Pentz Road (including Spring Valley School) into the PRPD service area.</i></p> <p><i>The District should continue to consider the needs of the growing population of senior citizens in the District when planning programs, services, and facilities, and to solicit input from seniors in the community.</i></p>

4.5 SUMMARY OF DETERMINATIONS

DETERMINATION 4-1: PRESENT AND PLANNED LAND USE	
	<p><i>No significant change in land uses within the District is anticipated over the next 20 years. While the County’s Draft General Plan 2030 is still in the planning process, a land use alternative has been developed that could increase the potential buildout within the Town of Paradise’s SOI by as many as 3,220 dwelling units. However, no change in land use has been adopted as of the writing of this document.</i></p>
DETERMINATION 4-2: PRESENT AND PROBABLE NEED FOR PUBLIC SERVICES AND FACILITIES	
	<p><i>With Magalia/Paradise Pines, Concow, and Butte Creek Canyon already identified as underserved areas by the 2005 MSR, and all expected to experience varying degrees of population growth, it is recommended that the District consider the acquisition and development of new parkland and facilities in these areas a priority, along with improvements to the existing park in Concow. The District should watch population growth in the Yankee Hill area and solicit community input to see if acquiring parkland there is warranted.</i></p> <p><i>A staff position should be added, or existing staff and volunteers should be dedicated, for the purpose of pursuing grants, donations, and other funding mechanisms for the acquisition and development of additional parkland and facilities.</i></p> <p><i>The Town of Paradise and the District should work together to develop a formal written agreement regarding their current and future overlapping boundaries and service areas.</i></p>
DETERMINATION 4-3: PRESENT CAPACITY OF FACILITIES	
	<p><i>The present capacity of District facilities within the Town of Paradise appears to be sufficient for the current population. As population growth occurs in the areas south of the Town over the next 20 years, additional parkland and facilities will be required to meet the anticipated increase in demand for services.</i></p> <p><i>The District does not currently have adequate developed parkland and facilities to serve the communities of Magalia/Paradise Pines, Butte Creek Canyon, and Concow/Yankee Hill, all of which are anticipated to experience some degree of population growth. To provide adequate opportunities for the existing population, and to plan for future growth, additional parkland should be acquired and existing parkland improved. The District has plans for several properties for park creation that should be purchased.</i></p> <p><i>Presently, staffing for the District appears adequate for day-to-day functions. However, staff should be added as facilities are developed and parkland is acquired to provide maintenance, regular programming, and recreational services and as noted in Determination 4-2 to address obtaining grants.</i></p> <p><i>Assessments or grant funding should continue to be sought and obtained to provide adequate funding for the acquisition and development of recreational facilities.</i></p>

DETERMINATION 4-4: SOCIAL AND ECONOMIC COMMUNITIES OF INTEREST

It is recommended that the community of Stirling City be included in the Paradise Recreation and Park District's SOI for future annexation into the District.

The District should continue to consider the needs of the growing population of senior citizens in the District when planning programs, services, and facilities, and to solicit input from seniors in the community.

5.0 FINAL SPHERE OF INFLUENCE ACTIONS

This Section includes the results of Butte LAFCO's final actions on this SOI Plan for the Paradise Recreation and Park District.

ADOPTION OF MUNICIPAL SERVICE REVIEW UPDATE AND ADOPTION OF A SPHERE OF INFLUENCE PLAN/UPDATE FOR THE PARADISE RECREATION AND PARK DISTRICT

WHEREAS, a service review mandated by Government Code 56430 and a sphere of influence update mandated by Government Code Section 56425 have been conducted by the Local Agency Formation Commission of the County of Butte (hereinafter referred to as "the Commission") for the Paradise Recreation and Park District in accordance with the Cortese-Knox-Hertzberg Local Government Reorganization Act of 2000 (Government Code Sections 56000 et seq.); and

WHEREAS, at the times and in the form and manner provided by law, the Executive Officer has given notice of the public hearing by the Commission on this matter; and,

WHEREAS, the Executive Officer, pursuant to Government Code Section 56428, has reviewed this proposal and prepared a report, including his recommendations thereon, and has furnished a copy of this report to each person entitled to a copy; and

WHEREAS, a public hearing by this Commission was called for April 2, 2009, and at the time and place specified in the notice of public hearing; and,

WHEREAS, at the hearing, this Commission heard and received all oral and written protests; the Commission considered all plans and proposed changes of organization, objections and evidence which were made, presented, or filed; and all persons present were given an opportunity to hear and be heard in respect to any matter relating to the proposal, in evidence presented at the hearing; and

WHEREAS, based upon the comments of staff and interested individuals, the Commission continued the hearing open until the June 4, 2009, meeting so that additional information regarding proposed park district boundaries, property tax data, Crain Park, and other recreational opportunities in the Concow/Yankee Hill area could be obtained and brought back to the Commission for their review; and

WHEREAS, at the June 4, 2009, hearing, this Commission heard and received all oral and written protests and continued the hearing open until the July 2, 2009, meeting to allow staff to prepare the final resolution for adoption; and

WHEREAS, at the July 2, 2009, hearing, this Commission heard and received all oral and written protests; the Commission considered all plans and proposed changes of organization, objections and evidence which were made, presented, or filed; and all persons present were given an opportunity to hear and be heard in respect to any matter relating to the proposal, in evidence presented at the hearing; and

WHEREAS, a statutory exemption has been issued pursuant to the provisions of the California Environmental Quality Act (CEQA) indicating that the Municipal Service Review Update for the Paradise Recreation and Park District is statutorily exempt from CEQA and such exemption was adopted by this Commission on July 2, 2009; and.

WHEREAS, pursuant to the provisions of the California Environmental Quality Act (CEQA), an initial study/negative declaration was prepared and circulated for a 21-day public review period for the Sphere of Influence Plan for the Paradise Recreation and Park District. The Initial Study shows that there is no substantial evidence, in light of the whole record before the agency, that the project may have a significant effect on the environment. The proposed

Negative Declaration is the appropriate level of environmental review pursuant to the California Environmental Quality Act, Article 6, Section 15070 of the CEQA Guidelines.

WHEREAS, the following determinations are made in conformance with Government Code Section 56430 and local Commission policy:

Determination 3-1.1: Growth and Population for the Affected Area

The population in the District is expected to grow at a rate of 1.1 percent.

Determination 3-1.2: Infrastructure Needs and Deficiencies

The District uses appropriate methods to gauge the need for, fund, and provide parkland, recreational facilities, and recreational programming to meet the needs of the community and has sufficient land holdings to accommodate future needs, though these land holdings are not necessarily in locations that are suitable with respect to accessibility for existing and future populations. The District provides adequate levels of service for parks and recreational facilities except in outlying areas such as Butte Creek Canyon and the eastern communities of Concow and Yankee Hill. The District has prioritized parkland development in Magalia/Paradise Pines, Butte Creek Canyon, and the Concow area, and the District should also acquire and develop parkland in the Yankee Hill area if population growth occurs.

Determination 3-1.3: Infrastructure Needs and Deficiencies

In order to more effectively define service areas, the SOI boundary between the PRPD and FRRPD is to be redrawn to place all lands north and east of the North Fork Feather River and the territory north of Durham-Pentz Road (including Spring Valley School) into the PRPD service area.

Determination 3-1.4: Infrastructure Needs and Deficiencies

Crain Park does not currently provide a reasonably maintained or equipped facility to the community and will require significant investment to function as a full service community park site. Short of a full improvement plan, PRPD could provide a program at Crain Park similar to PRPD's "Camp Coutolenc" located at Coutolenc Park in Magalia which offers a variety of outdoor activities including archery, crafts, camp cooking, sports and games, hiking, camp safety, and environmental awareness.

Determination 3-1.5: Infrastructure Needs and Deficiencies

The PRPD should immediately pursue a committed partnership with the GFUESD through the development of a comprehensive joint use agreement that would allow for the use of all school district facilities that have the potential to enhance recreational programs and services in the PRPD's eastern communities' service area.

Determination 3-2: Financing, Rate Restructuring, Constraints and Opportunities

The District has been using reserve funding to balance its budget in recent years, and should consider adopting a reserve funding standard. The District should more carefully explore the opportunities for creating benefit assessment districts or other similar funding mechanisms to secure long-term funding for the maintenance and operation of park and

recreational facilities. The District should consider increasing programming fees to help cover administrative and overhead costs.

Determination 3-3.1: Management Efficiencies/Cost Avoidance, and Facility Sharing Opportunities

The District has an adequate management structure, but should pursue more comprehensive facility sharing arrangements. Staffing levels are inadequate to care for all developed and natural areas under District ownership and the District should consider using private contractors for certain repetitive and labor intensive activities where cost savings could be achieved.

Determination 3-3.2: Management Efficiencies/Cost Avoidance, and Facility Sharing Opportunities

The residents of the eastern communities of the PRPD, due to geographic/topographic separation, do not currently receive an equitable level of service accessibility in contrast to the resident's of the Paradise Ridge. The PRPD should continue with plans to fully develop Crain Park and increase opportunities for recreational programming in cooperation with the GFUESD and the TWSD.

Determination 3-3.3: Management Efficiencies/Cost Avoidance, and Facility Sharing Opportunities

The PRPD should immediately pursue a committed partnership with the GFUESD through the development of a comprehensive joint use agreement for the operation and maintenance of the Concow Pool and the utilization of other school district facilities that have the potential to enhance recreational programs and services.

Determination 3-3.4: Management Efficiencies/Cost Avoidance, and Facility Sharing Opportunities

The PRPD should pursue discussions with the TWSD with the intent of developing an agreement for the limited use of the lake for defined recreational programs and services.

Determination 3-4: Local Accountability

The District provides the public with adequate information and opportunity for input and involvement in District activities.

Determination 3-5.1: Government Structure

The District should consider detachment proceedings for Butte Creek Canyon if there is support among the majority of residents. The District should also consider Stirling City for annexation. The District should either establish a formal agreement with the Golden Feather Union Elementary School District to maintain the Concow Elementary School pool or investigate the feasibility of a benefit assessment district for the pool.

Determination 3-5.2: Government Structure (SOI Boundary)

In order to more effectively define service areas, the SOI boundary between the PRPD and FRRPD is to be redrawn to place all lands north and east of the North Fork Feather

River and the territory north of Durham-Pentz Road (including Spring Valley School) into the PRPD service area.

WHEREAS, the following determinations are made in conformance with Government Code Section 56425 and local Commission policy:

1. Determination 4-1: Present and Planned Land Use

No significant change in land uses within the District is anticipated over the next 20 years. While the County's Draft General Plan 2030 is still in the planning process, a land use alternative has been developed that could increase the potential buildout within the Town of Paradise's SOI by as many as 3,220 dwelling units. However, no change in land use has been adopted as of the writing of this document.

2. Determination 4-2: Present and Probable Need for Public Facilities and Services

With Magalia/Paradise Pines, Concow, and Butte Creek Canyon already identified as underserved areas by the 2005 MSR, and all expected to experience varying degrees of population growth, it is recommended that the District consider the acquisition and development of new parkland and facilities in these areas a priority, along with improvements to the existing park in Concow. The District should watch population growth in the Yankee Hill area and solicit community input to see if acquiring parkland there is warranted.

A staff position should be added, or existing staff and volunteers should be dedicated, for the purpose of pursuing grants, donations, and other funding mechanisms for the acquisition and development of additional parkland and facilities.

The Town of Paradise and the District should work together to develop a formal written agreement regarding their current and future overlapping boundaries and service areas.

3. Determination 4-3: Present Capacity of Facilities

The present capacity of District facilities within the Town of Paradise appears to be sufficient for the current population. As population growth occurs in the areas south of the Town over the next 20 years, additional parkland and facilities will be required to meet the anticipated increase in demand for services.

The District does not currently have adequate developed parkland and facilities to serve the communities of Magalia/Paradise Pines, Butte Creek Canyon, and Concow/Yankee Hill, all of which are anticipated to experience some degree of population growth. To provide adequate opportunities for the existing population, and to plan for future growth, additional parkland should be acquired and existing parkland improved. The District has plans for several properties for park creation that should be purchased.

Presently, staffing for the District appears adequate for day-to-day functions. However, staff should be added as facilities are developed and parkland is acquired to provide maintenance, regular programming, and recreational services and as noted in Determination 4-2 to address obtaining grants.

Assessments or grant funding should continue to be sought and obtained to provide adequate funding for the acquisition and development of recreational facilities.

4. Determination 4-4: Social and Economic Communities of Interest

It is recommended that the community of Stirling City be included in the Paradise Recreation and Park District's SOI for future annexation into the District.

In order to more effectively define service areas, the SOI boundary between the PRPD and FRRPD is to be redrawn to place all lands north and east of the North Fork Feather River and the territory north of Durham-Pentz Road (including Spring Valley School) into the PRPD service area.

The District should continue to consider the needs of the growing population of senior citizens in the District when planning programs, services, and facilities, and to solicit input from seniors in the community.

WHEREAS, based on presently existing evidence, facts, and circumstances considered by this Commission, including the findings as outlined above, the Commission adopts written determinations as set forth. The Commission updates the existing sphere of influence for the Paradise Recreation and Park District by adding the Stirling City, Pulga, Big Bend, and Lower Pentz Road areas to the District's Sphere of Influence, and removing the Poe Powerhouse area from the District's Sphere of Influence, as depicted in the SOI Plan for the Paradise Recreation and Park District, adopted by the Commission on July 2, 2009; and,

NOW, THEREFORE, BE IT RESOLVED, that pursuant to powers provided in §56430 of the Cortese-Knox-Hertzberg Local Government Reorganization Act of 2000, the Local Agency Formation Commission of the County of Butte adopts written determinations as set forth in the Municipal Service Review Update for the Paradise Recreation and Park District dated July 2, 2009, and adopts the Municipal Service Review Update for the Paradise Recreation and Park District. Furthermore, pursuant to powers provided in §56425, the Commission updates the existing sphere of influence for the Paradise Recreation and Park District as depicted in the SOI Plan for the Paradise Recreation and Park District, adopted by the Commission on July 2, 2009

PASSED AND ADOPTED by this Local Agency Formation Commission of the County of Butte, on the 2nd day of July 2009, by the following vote:

AYES: Commissioners Lotter, Duncan, Connelly, Frith, Dolan and Chair Leverenz


NOES: None

ABSENT: Alternate Commissioner Sweany

ABSTAINS: None

ATTEST: None

Clerk of the Commission



CARL LEVERENZ, Chair
Butte Local Agency Formation Commission

5.2 SUMMARY OF ADOPTED MSR DETERMINATIONS FOR THE PARADISE RECREATION AND PARK DISTRICT

DETERMINATION 3-1: GROWTH AND POPULATION FOR THE AFFECTED AREA	
	<i>The population in the District is expected to grow at a rate of 1.1 percent.</i>
DETERMINATION 3-2: PRESENT AND PLANNED CAPACITY OF PUBLIC FACILITIES AND ADEQUACY OF PUBLIC SERVICES, INCLUDING INFRASTRUCTURE NEEDS AND DEFICIENCIES	
	<p><i>3-2.1: The District uses appropriate methods to gauge the need for, fund, and provide parkland, recreational facilities, and recreational programming to meet the needs of the community and has sufficient land holdings to accommodate future needs, though these land holdings are not necessarily in locations that are suitable with respect to accessibility and existing and future populations. The District provides adequate levels of service for parks and recreational facilities except in outlying areas such as Butte Creek Canyon and the eastern communities of Concow and Yankee Hill. The District has prioritized parkland development in Magalia/Paradise Pines, Butte Creek Canyon, and the Concow area, and the District should also acquire and develop parkland in the Yankee Hill area if population growth occurs.</i></p> <p><i>3-2.2: In order to more effectively define service areas, the SOI boundary between the PRPD and FRRPD is to be redrawn to place all lands north and east of the North Fork Feather River and the territory north of Durham-Pentz Road (including Spring Valley School) into the PRPD service area.</i></p> <p><i>3-2.3: Crain Park does not currently provide a reasonably maintained or equipped facility to the community and will require significant investment to function as a full-service community park site. Short of a full improvement plan, PRPD could provide a program at Crain Park similar to PRPD’s “Camp Coutolenc,” located at Coutolenc Park in Magalia, which offers a variety of outdoor activities including archery, crafts, camp cooking, sports and games, hiking, camp safety, and environmental awareness.</i></p> <p><i>3-2.4: The PRPD should immediately pursue a committed partnership with the GFUESD through the development of a comprehensive joint use agreement that would allow for the use of school district facilities that have the potential to enhance recreational programs and services in the PRPD’s eastern communities’ service area.</i></p>
DETERMINATION 3-3: FINANCING, RATE RESTRUCTURING, CONSTRAINTS AND OPPORTUNITIES	
	<i>The District has been using reserve funding to balance its budget in recent years, and should consider adopting a reserve funding standard. The District should more carefully explore the opportunities for creating benefit assessment districts or other similar funding mechanisms to secure long-term funding for the maintenance and operation of park and recreational facilities. The District should consider increasing programming fees to help cover administrative and overhead costs.</i>

DETERMINATION 3-4: MANAGEMENT EFFICIENCIES/COST AVOIDANCE AND FACILITY SHARING OPPORTUNITIES

3-4.1: The District has an adequate management structure, but should pursue more comprehensive facility sharing arrangements. Staffing levels are inadequate to care for all developed and natural areas under District ownership and the District should consider using private contractors for certain repetitive and labor intensive activities where cost savings could be achieved.

3-4.2: The residents of the eastern communities of the PRPD, due to geographic/topographic separation, do not currently receive an equitable level of service accessibility in contrast to the resident's of the Paradise Ridge. The PRPD should continue with plans to fully develop Crain Park and increase opportunities for recreational programming in cooperation with the GFUESD and the Thermalito Water and Sewer District (TWSD).

3-4.3: The PRPD should immediately pursue a committed partnership with the GFUESD through the development of a comprehensive joint use agreement for the operation and maintenance of the Concow Pool and the utilization of other school district facilities that have the potential to enhance recreational programs and services.

3-4.4: The PRPD should pursue discussions with the TWSD with the intent of developing an agreement for the limited use of the Concow Reservoir for defined recreational programs and services.

DETERMINATION 3-5: LOCAL ACCOUNTABILITY

The District provides the public with adequate information and opportunity for input and involvement in District activities.

DETERMINATION 3-6: GOVERNMENT STRUCTURE

The District should consider detachment proceedings for Butte Creek Canyon if there is support among the majority of residents. The District should also consider Stirling City for annexation. The District should either establish a formal agreement with the Golden Feather Union Elementary School District to maintain the Concow Elementary School pool or investigate the feasibility of a benefit assessment district for the pool.

5.3 SUMMARY OF ADOPTED SOI DETERMINATIONS FOR THE PARADISE RECREATION AND PARK DISTRICT

DETERMINATION 4-1: PRESENT AND PLANNED LAND USE	
	<p><i>No significant change in land uses within the District is anticipated over the next 20 years. While the County’s Draft General Plan 2030 is still in the planning process, a land use alternative has been developed that could increase the potential buildout within the Town of Paradise’s SOI by as many as 3,220 dwelling units. However, no change in land use has been adopted as of the writing of this document.</i></p>
DETERMINATION 4-2: PRESENT AND PROBABLE NEED FOR PUBLIC SERVICES AND FACILITIES	
	<p><i>With Magalia/Paradise Pines, Concow, and Butte Creek Canyon already identified as underserved areas by the 2005 MSR, and all expected to experience varying degrees of population growth, it is recommended that the District consider the acquisition and development of new parkland and facilities in these areas a priority, along with improvements to the existing park in Concow. The District should watch population growth in the Yankee Hill area and solicit community input to see if acquiring parkland there is warranted.</i></p> <p><i>A staff position should be added, or existing staff and volunteers should be dedicated, for the purpose of pursuing grants, donations, and other funding mechanisms for the acquisition and development of additional parkland and facilities.</i></p> <p><i>The Town of Paradise and the District should work together to develop a formal written agreement regarding their current and future overlapping boundaries and service areas.</i></p>

DETERMINATION 4-3: PRESENT CAPACITY OF FACILITIES

The present capacity of District facilities within the Town of Paradise appears to be sufficient for the current population. As population growth occurs in the areas south of the Town over the next 20 years, additional parkland and facilities will be required to meet the anticipated increase in demand for services.

The District does not currently have adequate developed parkland and facilities to serve the communities of Magalia/Paradise Pines, Butte Creek Canyon, and Concow/Yankee Hill, all of which are anticipated to experience some degree of population growth. To provide adequate opportunities for the existing population, and to plan for future growth, additional parkland should be acquired and existing parkland improved. The District has plans for several properties for park creation that should be purchased.

Presently, staffing for the District appears adequate for day-to-day functions. However, staff should be added as facilities are developed and parkland is acquired to provide maintenance, regular programming, and recreational services and as noted in Determination 4-2 to address obtaining grants.

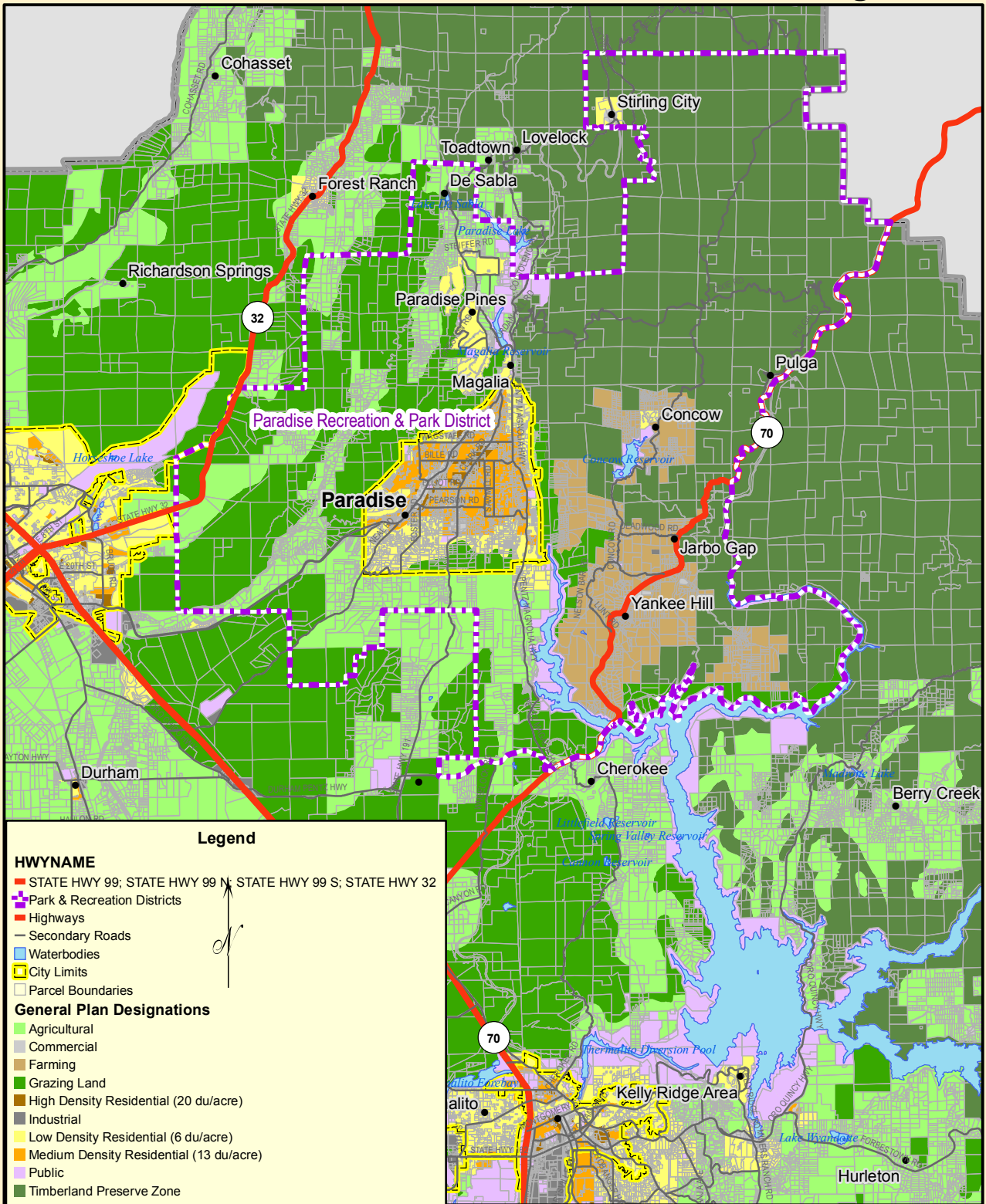
Assessments or grant funding should continue to be sought and obtained to provide adequate funding for the acquisition and development of recreational facilities.

DETERMINATION 4-4: SOCIAL AND ECONOMIC COMMUNITIES OF INTEREST

It is recommended that the community of Stirling City be included in the Paradise Recreation and Park District's SOI for future annexation into the District.

The District should continue to consider the needs of the growing population of senior citizens in the District when planning programs, services, and facilities, and to solicit input from seniors in the community.

Figure 5-1



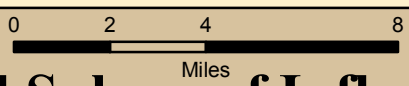
Legend

HWYNAME

- STATE HWY 99; STATE HWY 99 N; STATE HWY 99 S; STATE HWY 32
- Park & Recreation Districts
- Highways
- Secondary Roads
- Waterbodies
- City Limits
- Parcel Boundaries

General Plan Designations

- Agricultural
- Commercial
- Farming
- Grazing Land
- High Density Residential (20 du/acre)
- Industrial
- Low Density Residential (6 du/acre)
- Medium Density Residential (13 du/acre)
- Public
- Timberland Preserve Zone



**Adopted Sphere of Influence for
Paradise Recreation & Park District
BUTTE LOCAL AGENCY FORMATION COMMISSION**

Service area boundaries and sphere of influence boundaries are based on best available data, are provided for general representational purpose only. Adopted July 2, 2009 by Resolution No. 04 2009/10.

Kleinschmidt
Energy & Water Resource Consultants
251 South Auburn St., Suite C
Grass Valley, CA 95945
Telephone: (530) 852-4837
Fax: (530) 852-4837
www.KleinschmidtUSA.com

Source: Butte LAFCO

Notice of Exemption

Form D

To: Office of Planning and Research
PO Box 3044, 1400 Tenth Street, Room 212
Sacramento, CA 95812-3044

From: (Public Agency) Butte LAFCO
1453 Downer Street, Suite C
Oroville, CA 95965
(address)

County Clerk
County of Butte

Project Title: Municipal Service Review Update for the Paradise Recreation and Park Department

Project Location - Specific: The Paradise Recreation and Park District is generally located in the area surrounding the Town of Paradise. Communities located within this district include the Town of Paradise, Magalia, Paradise Pines, Concow, Yankee Hill, and Pentz.

Project Location – County: Butte

Description of Project: The Cortese/Knox/Hertzberg Act requires LAFCO to update prepare and update a Municipal Service Review (MSR) for each special district and city within their County. This project includes a MSR Update for the Paradise Recreation and Park District. The MSR is only an information document and no changes to land use will occur.

Name of Public Agency Approving Project: Butte LAFCO

Name of Person or Agency Carrying Out Project: Butte LAFCO

Exempt Status: (check one- double-click to check box)

- Ministerial (Sec. 21080(b)(1); 15268);
- Declared Emergency (Sec. 21080(b)(3); 15269(a));
- Emergency Project (Sec. 21080(b)(4); 15269(b)(c));
- Categorical Exemption. State type and section number: Information Collection, Section 15306
- Statutory Exemptions. State code number: _____

Reasons why project is exempt: As provided in CEQA Guidelines §15306, the proposed project is exempt because it will consist of basic data collection, research and resource evaluation activities and will not result in a serious or major disturbance to an environmental resource. CEQA Guidelines §15306 exempts such a project for information-gathering purposes, or as part of a study leading to future action which the agency has not yet taken.

Lead Agency

Contact Person: Stephen Betts, Deputy Executive Officer Area Code/Telephone/Extension: (530) 538-7784

Signature: Stephen Betts Date: 7-2-09 Title: Deputy Executive Officer

X Signed by Lead Agency Date received for filing at OPR: _____

Negative Declaration

Paradise Recreation and Park District SOI Plan Butte County, CA

Lead Agency:

**Butte Local Agency Formation Commission (LAFCO)
1453 Downer Street, Suite C
Oroville, CA 95965-49501
530-538-7784**

Contact: Stephen Lucas, Executive Officer

Prepared By:

**Kleinschmidt Associates
251 South Auburn Street, Suite C
Grass Valley, CA 95945
530-477-8808**

March 2, 2009

SECTION 1 INTRODUCTION

1.1 PURPOSE

Butte LAFCO is in the process of updating the Sphere of Influence (SOI) for the Paradise Recreation and Park District (PRPD or District). Sphere of Influence updates are subject to CEQA review, and because the SOI study for PRPD recommends changes to the District's SOI to include the unincorporated community of Stirling City to the north of the District sphere, a proposed Negative Declaration has been prepared.

1.2 PROJECT LOCATION

The project consists of the Paradise Recreation and Park District and areas to the north, including Stirling City. The PRPD is located in north-central Butte County, with all but small portions of it lying between the parallel stretches of Highway 32 and Highway 70. The District's western boundary is contiguous in part with the City of Chico's eastern boundary. The District consists of approximately 106,096 acres (165 square miles) and serves a population of approximately 41,200. It encompasses the Town of Paradise, the Butte Creek Canyon area, and the unincorporated communities of Magalia/Paradise Pines, Concow, and Yankee Hill. It also includes portions of four school districts: Chico Unified School District, Paradise Unified School District, Golden Feather Union Elementary School District, and Oroville Union High School District.

1.3 PROJECT DESCRIPTION

The primary purpose of the project is to bring the PRPD Sphere of Influence Plan into conformation with California law and with policy requirements of the Butte Local Agency Formation Commission (LAFCO). The Cortese/Knox/Hertzberg Act requires LAFCO to adopt an SOI for each city and district and to review and update each plan as appropriate every five years.

Before LAFCO can update or adopt an SOI, it is required to complete a Municipal Service Review (MSR), which is a report that analyzes and makes written determinations on six topic areas, including infrastructure, population growth, financing, government structure alternatives, and accountability. The Commission adopted an MSR for Recreation and Service Providers in Butte County in 2005. The MSR provides the informational foundation for the sphere updates. The 2005 MSR chapter for PRPD has been updated and is included as Section 3.1 of the SOI Study, and it will be re-adopted as a part of the SOI Plan process.

The Draft Sphere Plan proposed expanding the sphere of PRPD to include two areas: One consisting of the unincorporated community of Stirling City just north of the District, and the other located north of Highway 70 and east of the District, near Concow. The Stirling City area that is recommended for inclusion is located north of the District and is not within the boundaries or sphere of influence of any recreation and park district. The area has a population of approximately 436 and includes the community of Stirling City itself, which is completely surrounded by land zoned as Timber Preserve. This area consists of 259 parcels containing 1,630 acres. Of these, 83 are unimproved parcels, totaling 1,323 acres.

The other area recommended for inclusion in the District's SOI consists of the land located north of State Highway 70 that is currently within Feather River Recreation and Park District's (FRRPD) boundaries and SOI. FRRPD staff, in their current efforts to update their Master Plan, have recommended that portion of their District for detachment. The area is contiguous with all of Paradise Recreation and Park District's eastern boundary that lies north of State Highway 70. Its northern boundary corresponds with that of PRPD's, and its eastern boundary is coterminous with the Butte County line. Of the area's 60 parcels (17,523 acres), 5 are improved parcels, totaling 85 acres; and 55 are unimproved parcels, totaling 17,402 acres (the discrepancy in total acreage is due to road surface area).

1.4 INTENDED USES OF THIS DOCUMENT

This Initial Study is intended to identify potential impacts resulting from the expansion of the PRPD's existing SOI to include the Stirling City area. SOI Updates are subject to environmental review under CEQA.

1.5 ENVIRONMENTAL SETTING

Paradise Recreation and Park District is located in north-central Butte County, with all but small portions of it lying between the parallel stretches of Highway 32 and Highway 70. The District's western boundary is contiguous in part with the City of Chico's eastern boundary. The District consists of approximately 106,096 acres (165 square miles) and serves a population of approximately 41,200. It encompasses the Town of Paradise, the Butte Creek Canyon area, and the unincorporated communities of Magalia/Paradise Pines, Concow, and Yankee Hill. It also includes portions of four school districts: Chico Unified School District, Paradise Unified School District, Golden Feather Union Elementary School District, and Oroville Union High School District. Stirling City is an unincorporated community of approximately 300 residents located outside of the current District

boundaries and SOI to the northwest of the upper portion of the District. Stirling City is surrounded by Timber Preserve designated lands.

1.6 SUMMARY OF ENVIRONMENTAL CHECKLIST

Environmental Factors That Could Result in a Potentially Significant Impact		
The environmental factors listed below are not checked because the proposed project would not result in a “potentially significant impact” as indicated by the preceding checklist and supported by substantial evidence provided in this document.		
<input type="checkbox"/> Aesthetics	<input type="checkbox"/> Agriculture Resources	<input type="checkbox"/> Air Quality
<input type="checkbox"/> Biological Resources	<input type="checkbox"/> Cultural Resources	<input type="checkbox"/> Geology/Soils
<input type="checkbox"/> Hazards & Hazardous Materials	<input type="checkbox"/> Hydrology/Water Quality	<input type="checkbox"/> Land Use/Planning
<input type="checkbox"/> Mineral Resources	<input type="checkbox"/> Noise	<input type="checkbox"/> Population/Housing
<input type="checkbox"/> Public Services	<input type="checkbox"/> Recreation	<input type="checkbox"/> Transportation/Traffic
<input type="checkbox"/> Utilities/Services Systems	<input type="checkbox"/> Mandatory Findings of Significance	

SECTION 2 ENVIRONMENTAL CHECKLIST

Environmental Issues	Potentially Significant Impact	Less Than Significant With Mitigation	Less Than Significant Impact	No Impact
1. Aesthetics				
<i>Would the project:</i>				
a) Have a substantial adverse effect on a scenic vista?	<input type="checkbox"/>	<input type="checkbox"/>	<input type="checkbox"/>	<input checked="" type="checkbox"/>
b) Substantially damage scenic resources, including, but not limited to, trees, rock outcroppings, and historic building within a state scenic highway?	<input type="checkbox"/>	<input type="checkbox"/>	<input type="checkbox"/>	<input checked="" type="checkbox"/>
c) Substantially degrade the existing visual character or quality of the site and its surroundings?	<input type="checkbox"/>	<input type="checkbox"/>	<input type="checkbox"/>	<input checked="" type="checkbox"/>
d) Create a new source of substantial light or glare which would adversely affect day or nighttime views in the area?	<input type="checkbox"/>	<input type="checkbox"/>	<input type="checkbox"/>	<input checked="" type="checkbox"/>
<p>a-d) The project consists of the update of the Paradise Recreation and Park District Sphere of Influence (SOI). The sphere update includes plans for potential expansion of the boundaries of the District to include the unincorporated community of Stirling City and an area north of Highway 70 to the southeast of the District, consisting of a total of 319 parcels containing 19,153 acres. The Stirling City area recommended for inclusion contains 259 parcels totaling 1,630 acres. Additionally, the SOI Plan recommends expanding the SOI to include the area north of Highway 70 consisting of 60 parcels totaling 17,523 acres that are currently in Feather Recreation and Park District's (FRRPD) boundaries and recommended in FRRPD's Draft Master Plan for detachment. Any change in boundaries or SOI will require application to LAFCO by either or both Districts. No development will result from the adoption of the sphere update and no impacts to aesthetics will occur.</p> <p>Conclusion: <i>No significant impacts associated with aesthetics are anticipated from this project.</i></p> <p>Mitigation: <i>No mitigation measures would be required.</i></p>				
2. Agriculture Resources				
<i>Would the project:</i>				
a) Convert Prime Farmland, Unique Farmland, or Farmland of Statewide Importance (Farmland), as shown on the maps prepared pursuant to the Farmland Mapping and Monitoring Program of the California Resources Agency, to non-agricultural use?	<input type="checkbox"/>	<input type="checkbox"/>	<input type="checkbox"/>	<input checked="" type="checkbox"/>
b) Conflict with existing zoning for agricultural use, or a Williamson Act contract?	<input type="checkbox"/>	<input type="checkbox"/>	<input type="checkbox"/>	<input checked="" type="checkbox"/>
c) Involve other changes in the existing environment which, due to their location or nature, could result in conversion of Farmland, to non-agricultural use?	<input type="checkbox"/>	<input type="checkbox"/>	<input type="checkbox"/>	<input checked="" type="checkbox"/>

Environmental Issues	Potentially Significant Impact	Less Than Significant With Mitigation	Less Than Significant Impact	No Impact
<p>a-c) The project consists of the update of the Paradise Recreation and Park District Sphere of Influence (SOI). The sphere update includes plans for potential expansion of the boundaries of the District to include the unincorporated community of Stirling City and an area north of Highway 70 to the southeast of the District, consisting of a total of 319 parcels containing 19,153 acres. The Stirling City area recommended for inclusion contains 259 parcels totaling 1,630 acres. Additionally, the SOI Plan recommends expanding the SOI to include the area north of Highway 70 consisting of 60 parcels totaling 17,523 acres that are currently in Feather Recreation and Park District's (FRRPD) boundaries and recommended in FRRPD's Draft Master Plan for detachment. Any change in boundaries or SOI will require application to LAFCO by either or both Districts. No change in land use or increase in development will result from the adoption of the sphere update.</p> <p>Conclusion: <i>No significant impacts associated with agriculture are anticipated from this project.</i></p> <p>Mitigation: <i>No mitigation measures would be required.</i></p>				
<p>3. Air Quality <i>Would the project:</i></p>				
a) Conflict with or obstruct implementation of the applicable air quality plan?	<input type="checkbox"/>	<input type="checkbox"/>	<input type="checkbox"/>	<input checked="" type="checkbox"/>
b) Violate any air quality standard or contribute substantially to an existing or projected air quality violation?	<input type="checkbox"/>	<input type="checkbox"/>	<input type="checkbox"/>	<input checked="" type="checkbox"/>
c) Result in a cumulatively considerable net increase of any criteria pollutant for which the project region is non-attainment under an applicable federal or state ambient air quality standard (including releasing emissions, which exceed quantitative thresholds for ozone precursors)?	<input type="checkbox"/>	<input type="checkbox"/>	<input type="checkbox"/>	<input checked="" type="checkbox"/>
d) Expose sensitive receptors to substantial pollutant concentrations?	<input type="checkbox"/>	<input type="checkbox"/>	<input type="checkbox"/>	<input checked="" type="checkbox"/>
e) Create objectionable odors affecting a substantial number of people?	<input type="checkbox"/>	<input type="checkbox"/>	<input type="checkbox"/>	<input checked="" type="checkbox"/>
<p>a-e) The project consists of the update of the Paradise Recreation and Park District Sphere of Influence (SOI). The sphere update includes plans for potential expansion of the boundaries of the District to include the unincorporated community of Stirling City and an area north of Highway 70 to the southeast of the District, consisting of a total of 319 parcels containing 19,153 acres. The Stirling City area recommended for inclusion contains 259 parcels totaling 1,630 acres. Additionally, the SOI Plan recommends expanding the SOI to include the area north of Highway 70 consisting of 60 parcels totaling 17,523 acres that are currently in Feather Recreation and Park District's (FRRPD) boundaries and recommended in FRRPD's Draft Master Plan for detachment. Any change in boundaries or SOI will require application to LAFCO by either or both Districts. No change in land use or increase in development will result from the adoption of the sphere update.</p> <p>Conclusion: <i>No significant impacts associated with air quality are anticipated from this project.</i></p> <p>Mitigation: <i>No mitigation measures would be required.</i></p>				

4. Biological Resources				
<i>Would the project:</i>				
a) Have a substantial adverse effect, either directly or through habitat modifications, on any species identified as a candidate, sensitive, or special status species in local or regional plans, policies, or regulations, or by the California Department of Fish and Game or U.S. Fish and Wildlife Service?	<input type="checkbox"/>	<input type="checkbox"/>	<input type="checkbox"/>	<input checked="" type="checkbox"/>
b) Have a substantial adverse effect on any riparian habitat or other sensitive natural community identified in local or regional plans, policies, and regulations or by the California Department of Fish and Game or U.S. Fish and Wildlife Service?	<input type="checkbox"/>	<input type="checkbox"/>	<input type="checkbox"/>	<input checked="" type="checkbox"/>
c) Have a substantial adverse effect on federally protected wetlands as defined by Section 404 of the Clean Water Act (including, but not limited to, marsh, vernal pool, coastal, etc.) through direct removal, filling, hydrological interruption, or other means?	<input type="checkbox"/>	<input type="checkbox"/>	<input type="checkbox"/>	<input checked="" type="checkbox"/>
d) Interfere substantially with the movement of any native resident or migratory fish or wildlife species or with established native resident or migratory wildlife corridors, or impede the use of wildlife nursery sites?	<input type="checkbox"/>	<input type="checkbox"/>	<input type="checkbox"/>	<input checked="" type="checkbox"/>
e) Conflict with any local policies or ordinances protecting biological resources, such as a tree preservation policy or ordinance?	<input type="checkbox"/>	<input type="checkbox"/>	<input type="checkbox"/>	<input checked="" type="checkbox"/>
f) Conflict with the provisions of an adopted Habitat Conservation Plan, Natural Community Conservation Plan, or other approved local, regional, or state habitat conservation plan?	<input type="checkbox"/>	<input type="checkbox"/>	<input type="checkbox"/>	<input checked="" type="checkbox"/>
<p>a-f) The project consists of the update of the Paradise Recreation and Park District Sphere of Influence (SOI). The sphere update includes plans for potential expansion of the boundaries of the District to include the unincorporated community of Stirling City and an area north of Highway 70 to the southeast of the District, consisting of a total of 319 parcels containing 19,153 acres. The Stirling City area recommended for inclusion contains 259 parcels totaling 1,630 acres. Additionally, the SOI Plan recommends expanding the SOI to include the area north of Highway 70 consisting of 60 parcels totaling 17,523 acres that are currently in Feather Recreation and Park District's (FRRPD) boundaries and recommended in FRRPD's Draft Master Plan for detachment. Any change in boundaries or SOI will require application to LAFCO by either or both Districts. No change in land use or increase in development will result from the adoption of the sphere update.</p> <p>Conclusion: No significant impacts associated with biological resources are anticipated from this project.</p> <p>Mitigation: No mitigation measures would be required.</p>				
5. Cultural Resources				
<i>Would the project:</i>				
a) Cause a substantial adverse change in the significance of a historical resource as defined in §15064.5?	<input type="checkbox"/>	<input type="checkbox"/>	<input type="checkbox"/>	<input checked="" type="checkbox"/>

b) Cause a substantial adverse change in the significance of an archaeological resource pursuant to §15064.5?	<input type="checkbox"/>	<input type="checkbox"/>	<input type="checkbox"/>	<input checked="" type="checkbox"/>
c) Directly or indirectly destroy a unique paleontological resource or site or unique geologic feature?	<input type="checkbox"/>	<input type="checkbox"/>	<input type="checkbox"/>	<input checked="" type="checkbox"/>
d) Disturb any human remains, including those interred outside of formal cemeteries?	<input type="checkbox"/>	<input type="checkbox"/>	<input type="checkbox"/>	<input checked="" type="checkbox"/>
<p>a-d) The project consists of the update of the Paradise Recreation and Park District Sphere of Influence (SOI). The sphere update includes plans for potential expansion of the boundaries of the District to include the unincorporated community of Stirling City and an area north of Highway 70 to the southeast of the District, consisting of a total of 319 parcels containing 19,153 acres. The Stirling City area recommended for inclusion contains 259 parcels totaling 1,630 acres. Additionally, the SOI Plan recommends expanding the SOI to include the area north of Highway 70 consisting of 60 parcels totaling 17,523 acres that are currently in Feather Recreation and Park District's (FRRPD) boundaries and recommended in FRRPD's Draft Master Plan for detachment. Any change in boundaries or SOI will require application to LAFCO by either or both Districts. However, because the district is a recreation service provider, No change in land use or increase in development will result from the adoption of the sphere update.</p> <p>Conclusion: <i>No significant impacts associated with cultural resources are anticipated from this project.</i></p> <p>Mitigation: <i>No mitigation measures would be required.</i></p>				
<p>6. Geology and Soils <i>Would the project:</i></p>				
a) Expose people or structures to potential substantial adverse effects, including the risk of loss, injury or death involving:				
i) Rupture of a known earthquake fault, as delineated on the most recent Alquist-Priolo Earthquake Fault Zoning Map issued by the State Geologist for the area or based on other substantial evidence of a known fault? Refer to Division of Mines and Geology Special Publication 42.	<input type="checkbox"/>	<input type="checkbox"/>	<input type="checkbox"/>	<input checked="" type="checkbox"/>
ii) Strong seismic ground shaking?	<input type="checkbox"/>	<input type="checkbox"/>	<input type="checkbox"/>	<input checked="" type="checkbox"/>
iii) Seismic-related ground failure, including liquefaction?	<input type="checkbox"/>	<input type="checkbox"/>	<input type="checkbox"/>	<input checked="" type="checkbox"/>
iv) Landslides?	<input type="checkbox"/>	<input type="checkbox"/>	<input type="checkbox"/>	<input checked="" type="checkbox"/>
b) Result in substantial soil erosion or the loss of topsoil?	<input type="checkbox"/>	<input type="checkbox"/>	<input type="checkbox"/>	<input checked="" type="checkbox"/>
c) Be located on a geologic unit or soil that is unstable, or that would become unstable as a result of the project and potentially result in on- or off-site landslide, lateral spreading, subsidence, liquefaction or collapse?	<input type="checkbox"/>	<input type="checkbox"/>	<input type="checkbox"/>	<input checked="" type="checkbox"/>
d) Be located on expansive soil, as defined in Table 18-1-B of the Uniform Building Code (1994), creating substantial risks to life or property?	<input type="checkbox"/>	<input type="checkbox"/>	<input type="checkbox"/>	<input checked="" type="checkbox"/>

e) Have soils incapable of adequately supporting the use of septic tanks or alternative wastewater disposal systems where sewers are not available for the disposal of wastewater?	<input type="checkbox"/>	<input type="checkbox"/>	<input type="checkbox"/>	<input checked="" type="checkbox"/>
<p>a-e) The project consists of the update of the Paradise Recreation and Park District Sphere of Influence (SOI). The sphere update includes plans for potential expansion of the boundaries of the District to include the unincorporated community of Stirling City and an area north of Highway 70 to the southeast of the District, consisting of a total of 319 parcels containing 19,153 acres. The Stirling City area recommended for inclusion contains 259 parcels totaling 1,630 acres. Additionally, the SOI Plan recommends expanding the SOI to include the area north of Highway 70 consisting of 60 parcels totaling 17,523 acres that are currently in Feather Recreation and Park District's (FRRPD) boundaries and recommended in FRRPD's Draft Master Plan for detachment. Any change in boundaries or SOI will require application to LAFCO by either or both Districts. No change in land use or increase in development will result from the adoption of the sphere update.</p> <p>Conclusion: <i>No significant impacts associated with geology and soils are anticipated from this project.</i></p> <p>Mitigation: <i>No mitigation measures would be required.</i></p>				
7. Hazards and Hazardous Materials				
<i>Would the project:</i>				
a) Create a significant hazard to the public or the environment through the routine transport, use, or disposal of hazardous materials?	<input type="checkbox"/>	<input type="checkbox"/>	<input type="checkbox"/>	<input checked="" type="checkbox"/>
b) Create a significant hazard to the public or the environment through reasonably foreseeable upset and accident conditions involving the likely release of hazardous materials into the environment?	<input type="checkbox"/>	<input type="checkbox"/>	<input type="checkbox"/>	<input checked="" type="checkbox"/>
c) Emit hazardous emissions or handle hazardous or acutely hazardous materials, substances, or waste within one-quarter mile of an existing or proposed school?	<input type="checkbox"/>	<input type="checkbox"/>	<input type="checkbox"/>	<input checked="" type="checkbox"/>
d) Be located within one-quarter mile of a facility that might reasonably be anticipated to emit hazardous emissions or handle hazardous or acutely hazardous materials, substances or waste?	<input type="checkbox"/>	<input type="checkbox"/>	<input type="checkbox"/>	<input checked="" type="checkbox"/>
e) Be located on a site of a current or former hazardous waste disposal site or solid waste disposal site unless wastes have been removed from the former disposal site; or 2) that could release a hazardous substance as identified by the State Department of Health Services in a current list adopted pursuant to Section 25356 for removal or remedial action pursuant to Chapter 6.8 of Division 20 of the Health and Safety Code?	<input type="checkbox"/>	<input type="checkbox"/>	<input type="checkbox"/>	<input checked="" type="checkbox"/>
f) Be located on land that is, or can be made, sufficiently free of hazardous materials so as to be suitable for development and use as a school?	<input type="checkbox"/>	<input type="checkbox"/>	<input type="checkbox"/>	<input checked="" type="checkbox"/>

g) For a project located within an airport land use plan or, where such a plan has not been adopted, within two miles of a public airport or public use airport, would the project result in a safety hazard for people residing or working in the project area?	<input type="checkbox"/>	<input type="checkbox"/>	<input type="checkbox"/>	<input checked="" type="checkbox"/>
h) For a project within the vicinity of a private airstrip, would the project result in a safety hazard for people residing or working in the project area?	<input type="checkbox"/>	<input type="checkbox"/>	<input type="checkbox"/>	<input checked="" type="checkbox"/>
i) Impair implementation of or physically interfere with an adopted emergency response plan or emergency evacuation plan?	<input type="checkbox"/>	<input type="checkbox"/>	<input type="checkbox"/>	<input checked="" type="checkbox"/>
j) Expose people or structures to a significant risk of loss, injury or death involving wildland fires, including where wildlands are adjacent to urbanized areas or where residences are intermixed with wildlands?	<input type="checkbox"/>	<input type="checkbox"/>	<input type="checkbox"/>	<input checked="" type="checkbox"/>
k) Be located within 1500 feet of: (i) an above-ground water or fuel storage tank, or (ii) an easement of an above ground or underground pipeline that can pose a safety hazard to the proposed school?	<input type="checkbox"/>	<input type="checkbox"/>	<input type="checkbox"/>	<input checked="" type="checkbox"/>
<p>a-k) The project consists of the update of the Paradise Recreation and Park District Sphere of Influence (SOI). The sphere update includes plans for potential expansion of the boundaries of the District to include the unincorporated community of Stirling City and an area north of Highway 70 to the southeast of the District, consisting of a total of 319 parcels containing 19,153 acres. The Stirling City area recommended for inclusion contains 259 parcels totaling 1,630 acres. Additionally, the SOI Plan recommends expanding the SOI to include the area north of Highway 70 consisting of 60 parcels totaling 17,523 acres that are currently in Feather Recreation and Park District's (FRRPD) boundaries and recommended in FRRPD's Draft Master Plan for detachment. Any change in boundaries or SOI will require application to LAFCO by either or both Districts. No change in land use or increase in development will result from the adoption of the sphere update.</p> <p><i>Conclusion: No significant impacts associated with hazards and hazardous materials are anticipated from this project.</i></p> <p><i>Mitigation: No mitigation measures would be required.</i></p>				
<p>8. Hydrology and Water Quality <i>Would the project:</i></p>				
a) Violate any water quality standards or waste discharge requirements?	<input type="checkbox"/>	<input type="checkbox"/>	<input type="checkbox"/>	<input checked="" type="checkbox"/>
b) Substantially deplete groundwater supplies or interfere substantially with groundwater recharge such that there would be a net deficit in aquifer volume or a lowering of the local groundwater table level (e.g., the production rate of pre-existing nearby wells would drop to a level which would not support existing land uses or planned uses for which permits have been granted?)	<input type="checkbox"/>	<input type="checkbox"/>	<input type="checkbox"/>	<input checked="" type="checkbox"/>

c) Substantially alter the existing drainage pattern of area, including through the alteration of the course of a stream or river, in a manner which would result in substantial erosion or siltation on- or off-site?	<input type="checkbox"/>	<input type="checkbox"/>	<input type="checkbox"/>	<input checked="" type="checkbox"/>
d) Substantially alter the existing drainage pattern of the site or area, including through the alteration of the course of a stream or river, or substantially increase the rate or amount of surface runoff in a manner, which would result in flooding on- or off-site?	<input type="checkbox"/>	<input type="checkbox"/>	<input type="checkbox"/>	<input checked="" type="checkbox"/>
e) Create or contribute runoff water which would exceed the capacity of existing or planned stormwater drainage systems or provide substantial additional sources of polluted runoff?	<input type="checkbox"/>	<input type="checkbox"/>	<input type="checkbox"/>	<input checked="" type="checkbox"/>
f) Otherwise substantially degrade water quality?	<input type="checkbox"/>	<input type="checkbox"/>	<input type="checkbox"/>	<input checked="" type="checkbox"/>
g) Place housing within a 100-year flood hazard area as mapped on a federal Flood Hazard Boundary or Flood Insurance Rate Map or other flood hazard delineation map?	<input type="checkbox"/>	<input type="checkbox"/>	<input type="checkbox"/>	<input checked="" type="checkbox"/>
h) Place within a 100-year flood hazard area structures, which would impede or redirect flood flows?	<input type="checkbox"/>	<input type="checkbox"/>	<input type="checkbox"/>	<input checked="" type="checkbox"/>
i) Expose people or structures to a significant risk of loss, injury or death involving flooding, including flooding as a result of the failure of a levee or dam?	<input type="checkbox"/>	<input type="checkbox"/>	<input type="checkbox"/>	<input checked="" type="checkbox"/>
j) Inundation by seiche, tsunami, or mudflow?	<input type="checkbox"/>	<input type="checkbox"/>	<input type="checkbox"/>	<input checked="" type="checkbox"/>
<p>a-j) The project consists of the update of the Paradise Recreation and Park District Sphere of Influence (SOI). The sphere update includes plans for potential expansion of the boundaries of the District to include the unincorporated community of Stirling City and an area north of Highway 70 to the southeast of the District, consisting of a total of 319 parcels containing 19,153 acres. The Stirling City area recommended for inclusion contains 259 parcels totaling 1,630 acres. Additionally, the SOI Plan recommends expanding the SOI to include the area north of Highway 70 consisting of 60 parcels totaling 17,523 acres that are currently in Feather Recreation and Park District's (FRRPD) boundaries and recommended in FRRPD's Draft Master Plan for detachment. Any change in boundaries or SOI will require application to LAFCO by either or both Districts. No change in land use or increase in development will result from the adoption of the sphere update.</p> <p>Conclusion: <i>No significant impacts associated with hydrology and water quality are anticipated from this project.</i></p> <p>Mitigation: <i>No mitigation measures would be required.</i></p>				
9. Land Use Planning				
<i>Would the project:</i>				
a) Physically divide an established community?	<input type="checkbox"/>	<input type="checkbox"/>	<input type="checkbox"/>	<input checked="" type="checkbox"/>

<p>b) Conflict with any applicable land use plan, policy, or regulation of an agency with jurisdiction over the project (including, but not limited to the general plan, specific plan, local coastal program, or zoning ordinance) adopted for the purpose of avoiding or mitigating an environmental effect?</p>	<input type="checkbox"/>	<input type="checkbox"/>	<input type="checkbox"/>	<input checked="" type="checkbox"/>
<p>c) Conflict with any applicable habitat conservation plan or natural communities conservation plan?</p>	<input type="checkbox"/>	<input type="checkbox"/>	<input type="checkbox"/>	<input checked="" type="checkbox"/>
<p>a-c) The project consists of the update of the Paradise Recreation and Park District Sphere of Influence (SOI). The sphere update includes plans for potential expansion of the boundaries of the District to include the unincorporated community of Stirling City and an area north of Highway 70 to the southeast of the District, consisting of a total of 319 parcels containing 19,153 acres. The Stirling City area recommended for inclusion contains 259 parcels totaling 1,630 acres. Additionally, the SOI Plan recommends expanding the SOI to include the area north of Highway 70 consisting of 60 parcels totaling 17,523 acres that are currently in Feather Recreation and Park District's (FRRPD) boundaries and recommended in FRRPD's Draft Master Plan for detachment. Any change in boundaries or SOI will require application to LAFCO by either or both Districts. No change in land use or increase in development will result from the adoption of the sphere update.</p> <p>Conclusion: <i>No significant impacts associated with land use planning are anticipated from this project.</i></p> <p>Mitigation: <i>No mitigation measures would be required.</i></p>				
<p>10. Mineral Resources <i>Would the project:</i></p>				
<p>a) Result in the loss of availability of a known mineral resource that would be of value to the region and the residents of the state?</p>	<input type="checkbox"/>	<input type="checkbox"/>	<input type="checkbox"/>	<input checked="" type="checkbox"/>
<p>b) Result in the loss of availability of a locally-important mineral resource recovery site delineated on a local general plan, specific plan or other land use plan?</p>	<input type="checkbox"/>	<input type="checkbox"/>	<input type="checkbox"/>	<input checked="" type="checkbox"/>
<p>a-b) The project consists of the update of the Paradise Recreation and Park District Sphere of Influence (SOI). The sphere update includes plans for potential expansion of the boundaries of the District to include the unincorporated community of Stirling City and an area north of Highway 70 to the southeast of the District, consisting of a total of 319 parcels containing 19,153 acres. The Stirling City area recommended for inclusion contains 259 parcels totaling 1,630 acres. Additionally, the SOI Plan recommends expanding the SOI to include the area north of Highway 70 consisting of 60 parcels totaling 17,523 acres that are currently in Feather Recreation and Park District's (FRRPD) boundaries and recommended in FRRPD's Draft Master Plan for detachment. Any change in boundaries or SOI will require application to LAFCO by either or both Districts. No change in land use or increase in development will result from the adoption of the sphere update.</p> <p>Conclusion: <i>No significant impacts associated with mineral resources are anticipated from this project.</i></p> <p>Mitigation: <i>No mitigation measures would be required.</i></p>				
<p>11. Noise <i>Would the project result in:</i></p>				
<p>a) Exposure of persons to or generation of noise levels in excess of standards established in the local general plan or noise ordinance, or applicable standards of other agencies?</p>	<input type="checkbox"/>	<input type="checkbox"/>	<input type="checkbox"/>	<input checked="" type="checkbox"/>

b) Exposure of persons to or generation of excessive groundborne vibration or groundborne noise levels?	<input type="checkbox"/>	<input type="checkbox"/>	<input type="checkbox"/>	<input checked="" type="checkbox"/>
c) A substantial permanent increase in ambient noise levels in the project vicinity above levels existing without the project?	<input type="checkbox"/>	<input type="checkbox"/>	<input type="checkbox"/>	<input checked="" type="checkbox"/>
d) A substantial temporary or periodic increase in ambient noise levels in the project vicinity above levels existing without the project?	<input type="checkbox"/>	<input type="checkbox"/>	<input type="checkbox"/>	<input checked="" type="checkbox"/>
e) For a project located within an airport land use plan or, where such a plan has not been adopted, within two miles of a public airport or public use airport, would the project expose people residing or working in the project area to excessive noise levels?	<input type="checkbox"/>	<input type="checkbox"/>	<input type="checkbox"/>	<input checked="" type="checkbox"/>
f) For a project within the vicinity of a private airstrip, would the project expose people residing or working in the project area to excessive noise levels?	<input type="checkbox"/>	<input type="checkbox"/>	<input type="checkbox"/>	<input checked="" type="checkbox"/>
<p>a-f) The project consists of the update of the Paradise Recreation and Park District Sphere of Influence (SOI). The sphere update includes plans for potential expansion of the boundaries of the District to include the unincorporated community of Stirling City and an area north of Highway 70 to the southeast of the District, consisting of a total of 319 parcels containing 19,153 acres. The Stirling City area recommended for inclusion contains 259 parcels totaling 1,630 acres. Additionally, the SOI Plan recommends expanding the SOI to include the area north of Highway 70 consisting of 60 parcels totaling 17,523 acres that are currently in Feather Recreation and Park District's (FRRPD) boundaries and recommended in FRRPD's Draft Master Plan for detachment. Any change in boundaries or SOI will require application to LAFCO by either or both Districts. No change in land use or increase in development will result from the adoption of the sphere update.</p> <p>Conclusion: <i>No significant impacts associated with noise are anticipated from this project.</i></p> <p>Mitigation: <i>No mitigation measures would be required.</i></p>				
<p>12. Population and Housing <i>Would the project:</i></p>				
a) Induce substantial population growth in an area, either directly (e.g., by proposing new homes and businesses) or indirectly (e.g., through extension of roads or other infrastructure)?	<input type="checkbox"/>	<input type="checkbox"/>	<input type="checkbox"/>	<input checked="" type="checkbox"/>
b) Displace substantial numbers of existing housing, necessitating the construction of replacement housing elsewhere?	<input type="checkbox"/>	<input type="checkbox"/>	<input type="checkbox"/>	<input checked="" type="checkbox"/>
c) Displace substantial numbers of people necessitating the construction of replacement housing elsewhere?	<input type="checkbox"/>	<input type="checkbox"/>	<input type="checkbox"/>	<input checked="" type="checkbox"/>

a-c) The project consists of the update of the Paradise Recreation and Park District Sphere of Influence (SOI). The sphere update includes plans for potential expansion of the boundaries of the District to include the unincorporated community of Stirling City and an area north of Highway 70 to the southeast of the District, consisting of a total of 319 parcels containing 19,153 acres. The Stirling City area recommended for inclusion contains 259 parcels totaling 1,630 acres. Additionally, the SOI Plan recommends expanding the SOI to include the area north of Highway 70 consisting of 60 parcels totaling 17,523 acres that are currently in Feather Recreation and Park District's (FRRPD) boundaries and recommended in FRRPD's Draft Master Plan for detachment. Any change in boundaries or SOI will require application to LAFCO by either or both Districts. No change in land use or increase in development will result from the adoption of the sphere update.

Conclusion: *No significant impacts associated with population and housing are anticipated from this project.*

Mitigation: *No mitigation measures would be required.*

13. Public Services

Would the project result in substantial adverse physical impacts associated with the provision of new or physically altered governmental facilities, need for new or physically altered governmental facilities, the construction of which could cause significant environmental impacts, in order to maintain acceptable service ratios, response times or other performance objectives for any of the public services:

a) Fire Protection?	<input type="checkbox"/>	<input type="checkbox"/>	<input type="checkbox"/>	<input checked="" type="checkbox"/>
b) Police Protection?	<input type="checkbox"/>	<input type="checkbox"/>	<input type="checkbox"/>	<input checked="" type="checkbox"/>
c) Schools?	<input type="checkbox"/>	<input type="checkbox"/>	<input type="checkbox"/>	<input checked="" type="checkbox"/>
d) Parks?	<input type="checkbox"/>	<input type="checkbox"/>	<input checked="" type="checkbox"/>	<input type="checkbox"/>
e) Other public facilities?	<input type="checkbox"/>	<input type="checkbox"/>	<input type="checkbox"/>	<input checked="" type="checkbox"/>

a-d) The project consists of the update of the Paradise Recreation and Park District Sphere of Influence (SOI). The sphere update includes plans for potential expansion of the boundaries of the District to include the unincorporated community of Stirling City and an area north of Highway 70 to the southeast of the District, consisting of a total of 319 parcels containing 19,153 acres. The Stirling City area recommended for inclusion contains 259 parcels totaling 1,630 acres. Additionally, the SOI Plan recommends expanding the SOI to include the area north of Highway 70 consisting of 60 parcels totaling 17,523 acres that are currently in Feather Recreation and Park District's (FRRPD) boundaries and recommended in FRRPD's Draft Master Plan for detachment. Any change in boundaries or SOI will require application to LAFCO by either or both Districts. No change in land use or increase in development will result from the adoption of the sphere update.

d) The unincorporated community of Stirling City consists of approximately 300 residents. The area recommended for inclusion in the SOI consists of 259 parcels, totaling 1,630 acres, and has a population of approximately 426. The increase in population is not significant enough to trigger additional parkland requirements associated with the District's parkland standards at this time. However, with the inclusion of Stirling City into the PRPD SOI, eventual plans for District facilities and programming should be offered to those residents.

Additionally, the SOI Plan recommends expanding the SOI to include an area north of Highway 70 consisting of 60 parcels and totaling 17,523 acres that are currently in Feather Recreation and Park District's (FRRPD) boundaries and recommended in FRRPD's Draft Master Plan for detachment. Any change in boundaries or SOI will require application to LAFCO by either or both Districts. FRRPD currently does not offer or provide any services or facilities in this area and population within the area is very rural in nature. PRPD does coordinate with Golden Feather Union Elementary School to provide swimming pool services in the Concow area, which is relatively close to the area proposed for inclusion in the SOI.

Because there are currently no facilities planned in either area, it is impossible to determine what level of environmental impact may occur. Subsequent environmental review for development of future projects will be necessary as specifics are identified.

Conclusion: *Impacts associated with public services are anticipated to be less than significant.*

Mitigation: *No mitigation measures would be required.*

14. Recreation

- | | | | | |
|--|--------------------------|--------------------------|-------------------------------------|--------------------------|
| a) Would the project increase the use of existing neighborhood and regional parks or other recreational facilities such that substantial physical deterioration of the facility would occur or be accelerated? | <input type="checkbox"/> | <input type="checkbox"/> | <input checked="" type="checkbox"/> | <input type="checkbox"/> |
| b) Does the project include recreational facilities or require the construction or expansion of recreational facilities, which might have an adverse physical effect on the environment? | <input type="checkbox"/> | <input type="checkbox"/> | <input checked="" type="checkbox"/> | <input type="checkbox"/> |

a-b) The project consists of the update of the Paradise Recreation and Park District Sphere of Influence (SOI). The sphere update includes plans for potential expansion of the boundaries of the District to include the unincorporated community of Stirling City and an area north of Highway 70 to the southeast of the District, consisting of a total of 319 parcels containing 19,153 acres. The Stirling City area recommended for inclusion contains 259 parcels totaling 1,630 acres. Additionally, the SOI Plan recommends expanding the SOI to include the area north of Highway 70 consisting of 60 parcels totaling 17,523 acres that are currently in Feather Recreation and Park District's (FRRPD) boundaries and recommended in FRRPD's Draft Master Plan for detachment. Any change in boundaries or SOI will require application to LAFCO by either or both Districts. No change in land use or increase in development will result from the adoption of the sphere update.

The unincorporated community of Stirling City consists of approximately 300 residents. The area recommended for inclusion in the SOI consists of 259 parcels, totaling 1,630 acres, and has a population of approximately 436. The increase in population is not significant enough to trigger additional parkland requirements associated with the District's parkland standards at this time. However, with the inclusion of Stirling City into the PRPD SOI, eventual plans for District facilities and programming should be offered to those residents.

Additionally, the SOI Plan recommends expanding the SOI to include an area north of Highway 70 consisting of 60 parcels and totaling 17,523 acres that are currently in Feather Recreation and Park District's (FRRPD) boundaries and recommended in FRRPD's Draft Master Plan for detachment. Any change in boundaries or SOI will require application to LAFCO by either or both Districts. FRRPD currently does not offer or provide any services or facilities in this area and population within the area is very rural in nature. PRPD does coordinate with Golden Feather Union Elementary School to provide swimming pool services in the Concow area, which is relatively close to the area proposed for inclusion in the SOI.

Because there are currently no facilities planned in either area, it is impossible to determine what level of environmental impact may occur. Subsequent environmental review for development of future projects will be necessary as specifics are identified.

Conclusion: *Impacts to recreation facilities and needs are anticipated to be less than significant.*

Mitigation: *No mitigation measures would be required.*

15. Transportation/Traffic

Would the project:

a) Cause an increase in traffic, which is substantial in relation to the existing traffic load and capacity of the street system (i.e., result in a substantial increase in either the number of vehicle trips, the volume to capacity ratio on roads, or congestion at intersections)?	<input type="checkbox"/>	<input type="checkbox"/>	<input type="checkbox"/>	<input checked="" type="checkbox"/>
b) Exceed, either individually or cumulatively, a level of service standard established by the county congestion management agency for designated roads or highways?	<input type="checkbox"/>	<input type="checkbox"/>	<input type="checkbox"/>	<input checked="" type="checkbox"/>
c) Conflict with adopted policies, plans, or programs supporting alternative transportation (e.g., bus turnouts, bicycle racks)?	<input type="checkbox"/>	<input type="checkbox"/>	<input type="checkbox"/>	<input checked="" type="checkbox"/>
d) Substantially increase hazards due to a design feature (e.g., sharp curves or dangerous intersections) or incompatible uses (e.g., farm equipment)?	<input type="checkbox"/>	<input type="checkbox"/>	<input type="checkbox"/>	<input checked="" type="checkbox"/>

e) Result in inadequate emergency access?	<input type="checkbox"/>	<input type="checkbox"/>	<input type="checkbox"/>	<input checked="" type="checkbox"/>
f) Result in inadequate parking capacity?	<input type="checkbox"/>	<input type="checkbox"/>	<input type="checkbox"/>	<input checked="" type="checkbox"/>
<p>a-f) The project consists of the update of the Paradise Recreation and Park District Sphere of Influence (SOI). The sphere update includes plans for potential expansion of the boundaries of the District to include the unincorporated community of Stirling City and an area north of Highway 70 to the southeast of the District, consisting of a total of 319 parcels containing 19,153 acres. The Stirling City area recommended for inclusion contains 259 parcels totaling 1,630 acres. Additionally, the SOI Plan recommends expanding the SOI to include the area north of Highway 70 consisting of 60 parcels totaling 17,523 acres that are currently in Feather Recreation and Park District's (FRRPD) boundaries and recommended in FRRPD's Draft Master Plan for detachment. Any change in boundaries or SOI will require application to LAFCO by either or both Districts. No change in land use or increase in development will result from the adoption of the sphere update.</p> <p>Conclusion: <i>No significant impacts associated with transportation/traffic are anticipated from this project.</i></p> <p>Mitigation: <i>No mitigation measures would be required.</i></p>				
<p>16. Utilities and Service Systems</p> <p><i>Would the project:</i></p>				
a) Exceed wastewater treatment requirements of the applicable Regional Water Quality Control Board?	<input type="checkbox"/>	<input type="checkbox"/>	<input type="checkbox"/>	<input checked="" type="checkbox"/>
b) Require or result in the construction of new water or wastewater treatment facilities or expansion of existing facilities, the construction of which could cause significant environmental effects?	<input type="checkbox"/>	<input type="checkbox"/>	<input type="checkbox"/>	<input checked="" type="checkbox"/>
c) Require or result in the construction of new storm water drainage facilities or expansion of existing facilities, the construction of which could cause significant environmental effects?	<input type="checkbox"/>	<input type="checkbox"/>	<input type="checkbox"/>	<input checked="" type="checkbox"/>
d) Have sufficient water supplies available to serve the project from existing entitlements and resources, or are new or expanded entitlements needed?	<input type="checkbox"/>	<input type="checkbox"/>	<input type="checkbox"/>	<input checked="" type="checkbox"/>
e) Result in a determination by the wastewater treatment provider, which serves or may serve the project that it has adequate capacity to serve the project's projected demand in addition to the provider's existing commitments?	<input type="checkbox"/>	<input type="checkbox"/>	<input type="checkbox"/>	<input checked="" type="checkbox"/>
f) Be served by a landfill with sufficient permitted capacity to accommodate the project's solid waste disposal needs?	<input type="checkbox"/>	<input type="checkbox"/>	<input type="checkbox"/>	<input checked="" type="checkbox"/>
g) Comply with federal, state, and local statutes and regulations related to solid waste?	<input type="checkbox"/>	<input type="checkbox"/>	<input type="checkbox"/>	<input checked="" type="checkbox"/>

a-g) The project consists of the update of the Paradise Recreation and Park District Sphere of Influence (SOI). The sphere update includes plans for potential expansion of the boundaries of the District to include the unincorporated community of Stirling City and an area north of Highway 70 to the southeast of the District, consisting of a total of 319 parcels containing 19,153 acres. The Stirling City area recommended for inclusion contains 259 parcels totaling 1,630 acres. Additionally, the SOI Plan recommends expanding the SOI to include the area north of Highway 70 consisting of 60 parcels totaling 17,523 acres that are currently in Feather Recreation and Park District’s (FRRPD) boundaries and recommended in FRRPD’s Draft Master Plan for detachment. Any change in boundaries or SOI will require application to LAFCO by either or both Districts. No change in land use or increase in development will result from the adoption of the sphere update.

Conclusion: No significant impacts associated with utilities and service systems are anticipated from this project.

Mitigation: No mitigation measures would be required.

17. Mandatory Findings of Significance

<p>a) Does the project have the potential to degrade the quality of the environment, substantially reduce the habitat of a fish or wildlife species, cause a fish or wildlife population to drop below self-sustaining levels, threaten to eliminate a plant or animal community, reduce the number or restrict the range of a rare or endangered plant or animal, or eliminate important examples of the major periods of California history or prehistory?</p>	<input type="checkbox"/>	<input type="checkbox"/>	<input type="checkbox"/>	<input checked="" type="checkbox"/>
<p>b) Does the project have impacts that are individually limited, but cumulatively considerable? (“Cumulatively considerable” means that the incremental effects of a project are considerable when viewed in connection with the effects of past projects, the effects of other current projects, and the effects of probable future projects.)</p>	<input type="checkbox"/>	<input type="checkbox"/>	<input type="checkbox"/>	<input checked="" type="checkbox"/>
<p>c) Does the project have environmental effects, which will cause substantial adverse effects on human beings, either directly or indirectly?</p>	<input type="checkbox"/>	<input type="checkbox"/>	<input type="checkbox"/>	<input checked="" type="checkbox"/>

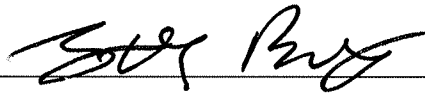
a-c) The project consists of the update of the Paradise Recreation and Park District Sphere of Influence (SOI). The sphere update includes plans for potential expansion of the boundaries of the District to include the unincorporated community of Stirling City and an area north of Highway 70 to the southeast of the District, consisting of a total of 319 parcels containing 19,153 acres. The Stirling City area recommended for inclusion contains 259 parcels totaling 1,630 acres. Additionally, the SOI Plan recommends expanding the SOI to include the area north of Highway 70 consisting of 60 parcels totaling 17,523 acres that are currently in Feather Recreation and Park District’s (FRRPD) boundaries and recommended in FRRPD’s Draft Master Plan for detachment. Any change in boundaries or SOI will require application to LAFCO by either or both Districts. No change in land use or increase in development will result from the adoption of the sphere update.

Environmental Determination

On the basis of this initial evaluation:

- I find that the proposed project could not have a significant effect on the environment, and a **Negative Declaration** will be prepared.
- I find that although the proposed project could have a significant effect on the environment, there will not be a significant effect in this case because revisions in the project have been made by or agreed to by the project proponent. A **Mitigated Negative Declaration** will be prepared.
- I find that the proposed project MAY have a significant effect on the environment, and an **Environmental Impact Report** is required.
- I find that the proposed project MAY have a “potentially significant impact” or “potentially significant unless mitigated” impact on the environment, but at least one effect 1) has been adequately analyzed in an earlier document pursuant to applicable legal standards, and 2) has been addressed by mitigation measure based on the earlier analysis as described on attached sheets. An **Environmental Impact Report** is required, but it must analyze only the effects that remain to be addressed.
- I find that although the proposed project could have a significant effect on the environment, because all potentially significant effects (a) have been analyzed adequately in an earlier **EIR** or **Negative Declaration** pursuant to applicable standards, and (b) have been avoided or mitigated pursuant to that earlier **EIR** or **Negative Declaration**, including revisions or mitigation measures that are imposed upon the proposed project, nothing further is required.

Signed



Date

3-11-09

SECTION 3 REFERENCES

1. Town of Paradise General Plan
2. Town of Paradise General Plan Land Use Designation Maps
3. Town of Paradise Zoning Code
4. County of Butte General Plan
5. County of Butte General Plan Land Use Designation Maps
6. Paradise Recreation and Park District Master Plan 2002–2016
7. 2005 Municipal Service Review of Recreation and Park Service Providers in Butte County
8. Draft Feather River Recreation and Park District Master Plan. January 2009.

6.0 ACRONYMS AND DEFINITIONS

BCAG	Butte County Association of Governments
CARD	Chico Area Recreation District
CEQA	California Environmental Quality Act
CKH	Cortese-Knox-Hertzberg Local Government Reorganization Act of 2000
CSA	County Service Area
DRPD	Durham Recreation and Park District
FRRPD	Feather River Recreation and Park District
LAFCO	Local Agency Formation Commission
MSR	Municipal Service Review
SOI	Sphere of Influence

ANNEXATION	The inclusion, attachment, or addition of a territory to a city or district.
BOARD OF DIRECTORS	The legislative body or governing board of a district.
CEQA	The California Environmental Quality Act (CEQA) is intended to inform governmental decision-makers and the public about potential environmental effects of a project, identify ways to reduce adverse impacts, offer alternatives to the project, and disclose to the public why a project was approved. CEQA applied to projects undertaken, funded, or requiring issuance of a permit by a public agency.
GENERAL PLAN	A document containing a statement of development policies including a diagram and text setting forth the objectives of the plan. The general plan must include certain state mandated elements related to land use, circulation, housing, conservation, open-space, noise, and safety.
LAFCO	A state mandated local agency that oversees boundary changes to cities and special districts, the formation of new agencies including incorporation of new cities, and the consolidation of existing

agencies. The broad goals of the agency are to ensure the orderly formation of local government agencies, to preserve agricultural and open space lands, and to discourage urban sprawl.

**MUNICIPAL SERVICE
REVIEW (MSR)**

A study designed to determine the adequacy of governmental services being provided in the region or sub-region. Performing service reviews for each city and special district within the county may be used by LAFCO, other governmental agencies, and the public to better understand and improve service conditions.

**SPHERE OF INFLUENCE
(SOI)**

A plan for the probable physical boundaries and service area of a local agency, as determined by the LAFCO.

**SPHERE OF INFLUENCE
DETERMINATIONS**

In establishing a sphere of influence, the Commission must consider and prepare written determinations related to present and planned land uses, need and capacity of public facilities, and existence of social and economic communities of interest.

ZONING

The primary instrument for implementing the general plan. Zoning divides a community into districts or “zones” that specify the permitted/prohibited land uses.

7.0 BIBLIOGRAPHY

- Butte County. 2000. Butte County General Plan. (Land Use Element, 2000; Recreation Element, 1971.) Adopted March 15, 1977.
- _____. 2000. Butte County Zoning Ordinance.
- _____. 2007. Butte County General Plan 2030. Setting and Trends Report – Public Draft. August 2, 2007. Available at www.buttegeneralplan.net/products/SettingandTrends/default.asp
- _____. 2007. Butte County General Plan 2030. Community Meetings: Concow/Jarbo Gap/Yankee Hill Community Meeting Summary. April 30, 2007. Available at www.buttegeneralplan.net/ebinder/community/con_yh/default.asp
- _____. 2007. Butte County General Plan 2030. Community Meetings: Stirling City Community Meeting Summary. June 11, 2007. Available at www.buttegeneralplan.net/ebinder/community/stirling/default.asp
- _____. 2008. Butte County General Plan 2030. Alternatives Evaluation Report. Chapters 5 and 10–13. Prepared by Design, Community & Environment. March 13, 2008. Available at www.buttegeneralplan.net/products/aer/
- Butte County Association of Governments (BCAG). 2006. Butte Regional Growth Projections 2006–2030. Available at www.bcag.org/documents/demographics/pop_emp_projections/Final_Regional_Growth_Projections.pdf
- Butte LAFCO. 1985. Paradise Area Sphere of Influence Study. Prepared by J. Laurence Mintier, Planning Consultant, and David Wade, David Wade and Associates. March 1985.
- _____. 2004. Operations Manual, Policies and Procedures. Revised December 2, 2004.
- _____. 2005. Municipal Service Review: Recreation & Park Services. Prepared by Cotton/Bridges/Associates. September 1, 2005.
- Paradise Recreation & Park District. 2001. Master Plan 2002–2016. Prepared by Foothill Associates. December 2001, with revisions through August 2007.
- State of California. 2008. Department of Finance. E-1: Population Estimates for Cities, Counties and the State with Annual Percent Change — January 1, 2007 and 2008. May 2008. Available at www.dof.ca.gov/research/demographic/reports/estimates/e-1_2006-07/documents/E-1table.xls
- _____. 2003. Local Agency Formation Commission Municipal Service Review Guidelines. Governor’s Office of Planning and Research. August 2003.

Stirling City. 2008. Stirling City website. www.stirlingcity.info/index.html

Town of Paradise. 1994. Town of Paradise 1994 General Plan. Volume I: Policy Document. As amended through October 2006. Town of Paradise Community Development Department, Quad Consultants.

_____. 1994. Town of Paradise 1994 General Plan. Volume III: Environmental Setting Document. As amended through September 1998. Town of Paradise Community Development Department, Quad Consultants.

_____. 2007. Town of Paradise Municipal Service Review. Prepared by Quad Knopf. August 2007. Available at http://www.buttelafco.org/index.php/documents/cat_view/3-municipal-service-reviews/8-final-msr-town-of-paradise

Personal communications with Mike Trinca, District Manager, Paradise Recreation and Park District. August 14 and November 5, 2008; January 20 and 22, 2009.

Personal communication with Al McGreehan, Community Development/Planning Director, Town of Paradise. August 14, 2008.